



DOOFOR INC. THE COMPANY

Enhance your solutions with efficient and versatile rock drilling

Doofor Inc. produces **always reliable and powerful rock drills, drifters and their spare parts**. Doofor drilling technology stands for endurance and highest technical quality in the industry: our unique products are **designed to endure even the most demanding environments**. As a Scandinavian pioneer in the drilling industry, we are constantly developing powerful, durable and most advanced rock drills for various hole diameters and uses.

Your partner from product development to end-user service

Doofor helps you to differentiate your product or service with **flexibility, dedication and creative and modern technology**. Highly skilled workforce and subcontracting network enables quick and tailored rock drill solutions for all platforms. Doofor works closely with customers and end users in finding **economical and durable solutions**. Doofor provides product development, design, manufacturing, training, maintenance and spare parts for rock drills.

DOOFOR INC. PRODUCTS

Competitive Doofor rock drills with latest technology offer multiple benefits. It's an honor to provide always the best and **most advanced options available** such as good drill steel economy and efficient lubrication. Modern self-developed **high-frequency technology** enables fast penetration with less stress to the drill tools. Patented and optimal percussion piston shape and enhanced shock wave transmission provide **economic efficiency**.

Doofor's high performance hydraulic rock drills **can be installed in any drilling platform** (hydraulic drill rigs, drill jumbos, etc.). Customizable Doofor solutions provide freedom for boom structure and easier retrofitting. Along with the rock drills, Doofor offers **aluminium profile** to suit the lighter rock drills. Doofor also provides a hydraulic feed system component kit for OEM's and machine building professionals.

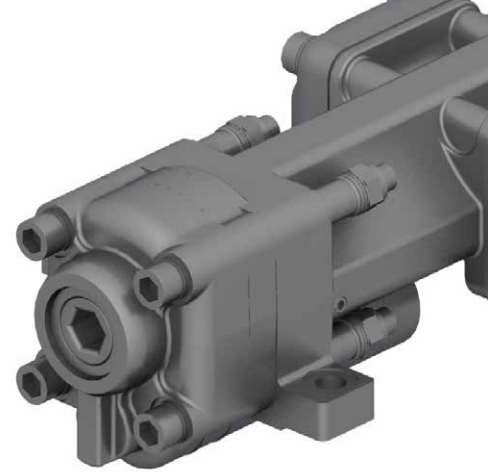


FROM NOKIA, FINLAND **WITH DEDICATION**

Unique Doofor drills are known as powerful, reliable and durable worldwide.
We ship to all continents and base our business in long-term customer partnerships.
We concentrate solely on the rock drills. **Our business is to enhance yours.**

DF430X HIGH-PERFORMANCE HYDRAULIC ROCK DRILL

Doofer DF430X is lightweight high-frequency rock drill for general excavations, quarrying and bolting. It can utilize air or water flushing. The rock drill has a female hexagonal chuck.



TECHNICAL SPECIFICATIONS

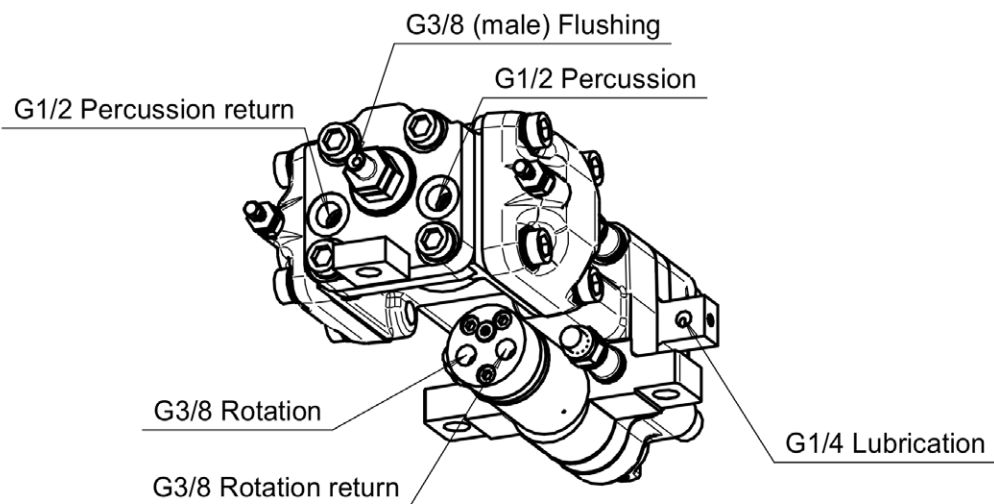
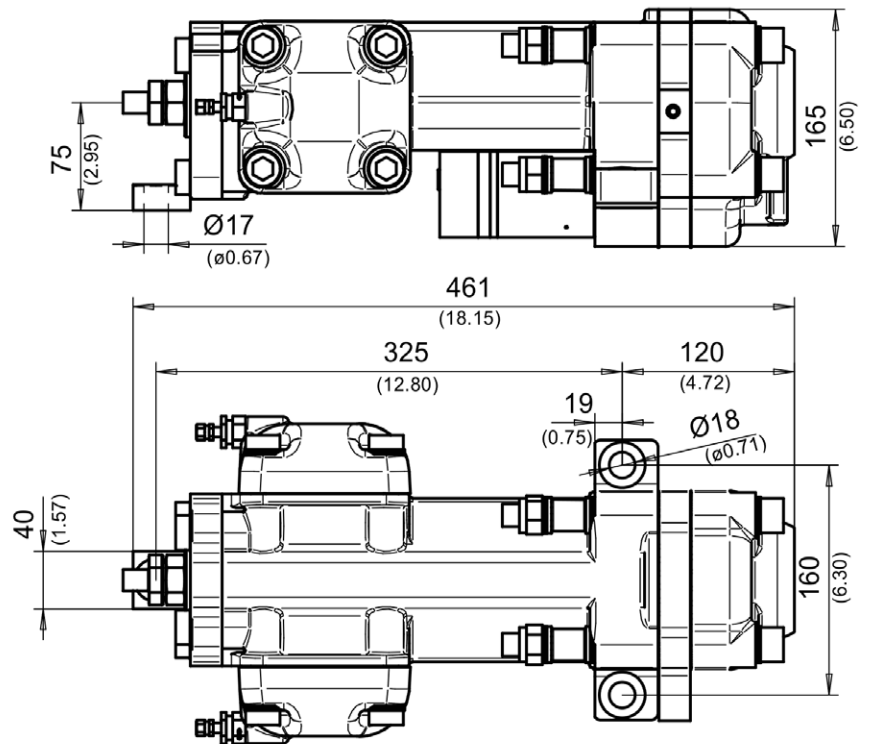
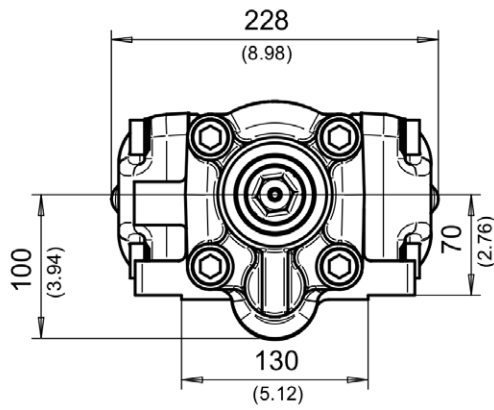
DOOFOR DF430X DRIFTER

NOMINAL POWER CLASS		5 kW	6.7 hp
OPTIMAL MAXIMUM HOLE SIZE		41 mm	1 3/5"
PERCUSSION FLOW		45 l/min	12 gpm
PERCUSSION PRESSURE		120 bar	1740 psi
ROTATION MOTOR MAXIMUM FLOW ¹⁾	8cc	20 l/min	5.4 gpm
	12.5cc	25 l/min	6.6 gpm
	20cc	25 l/min	6.6 gpm
	32cc	25 l/min	6.6 gpm
	40cc	25 l/min	6.6 gpm
ROTATION TORQUE ¹⁾	8cc	41 Nm	30 lb-ft
	12.5cc	64 Nm	47 lb-ft
	20cc	97 Nm	71 lb-ft
	32cc	158 Nm	116 lb-ft
	40cc	194 Nm	143 lb-ft
ROTATION PRESSURE MAXIMUM		140 bar	2031 psi
ROTATION SPEED MAXIMUM	8cc	300 rpm	
	12.5cc	300 rpm	
	20cc	300 rpm	
	32cc	227 rpm	
	40cc	180 rpm	
LUBRICATION	Air-oil mist	125–200 g/h	4.9–7.8 fl oz/h (1.4–2.3 dl/h)
LUBRICATION PRESSURE		4–7 bar	58–101 psi
LUBRICATION AIR FLOW		200–300 l/min	53–79 gpm
FLUSHING AIR PRESSURE ¹⁾		5–8 bar	73–116 psi
FLUSHING AIR FLOW ¹⁾		700–1200 l/min	185–317 gpm
FLUSHING WATER PRESSURE ¹⁾		4–12 bar	58–174 psi
FLUSHING WATER FLOW ¹⁾		15–30 l/min	4–8 gpm
FLUSHING TEMPERATURE		3–30°C	37–86°F
RECOMMENDED MAXIMUM FEED FORCE		3.7 kN	830 lbf
OPTIMUM OIL OPERATING VISCOSITY		30–60 cSt	
MAXIMUM OPERATING OIL TEMPERATURE		70 °C	158 °F
WEIGHT		41 kg	90 lb
SHANK SIZE		108mm [4 1/4"] * 22mm [7/8"] or 25mm[1"]	

¹⁾ Intermittent value.

²⁾ Actual values vary according to drilling conditions and equipment.

DIMENSIONS



DF430X has alternative models: DF430S with a male shank adapter, versatile DF430F with a female shank adapter and light piston models DF420X and DF410X.



DF430F AND DF430S HIGH-PERFORMANCE HYDRAULIC ROCK DRILLS

Doofer DF430F and DF430S are lightweight high-frequency rock drills for general excavations, quarrying and bolting. DF430F combines sealed air or water flushing system with female shank adapters. DF430S utilizes male shank adapters with air or water flushing.



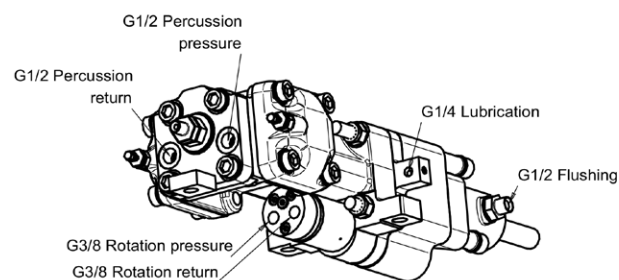
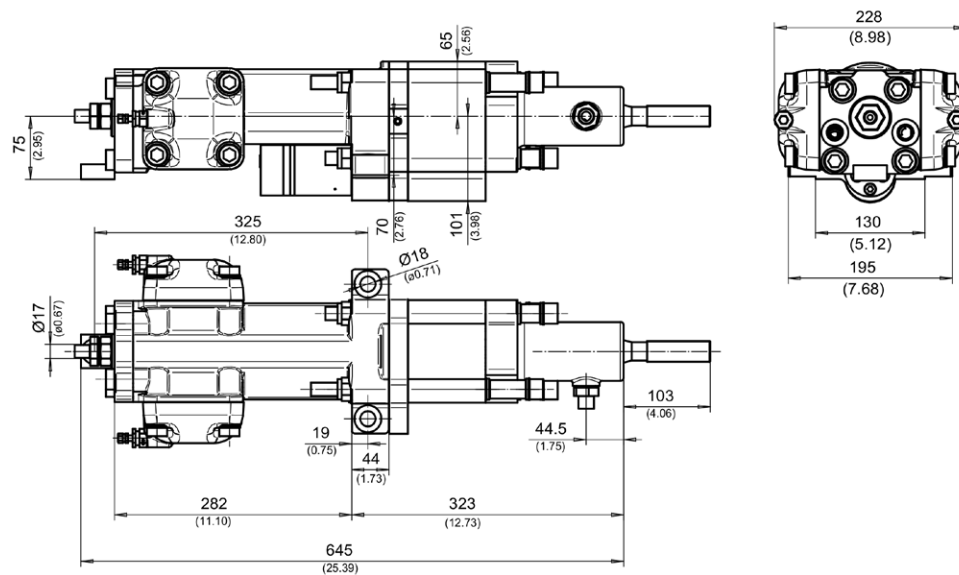
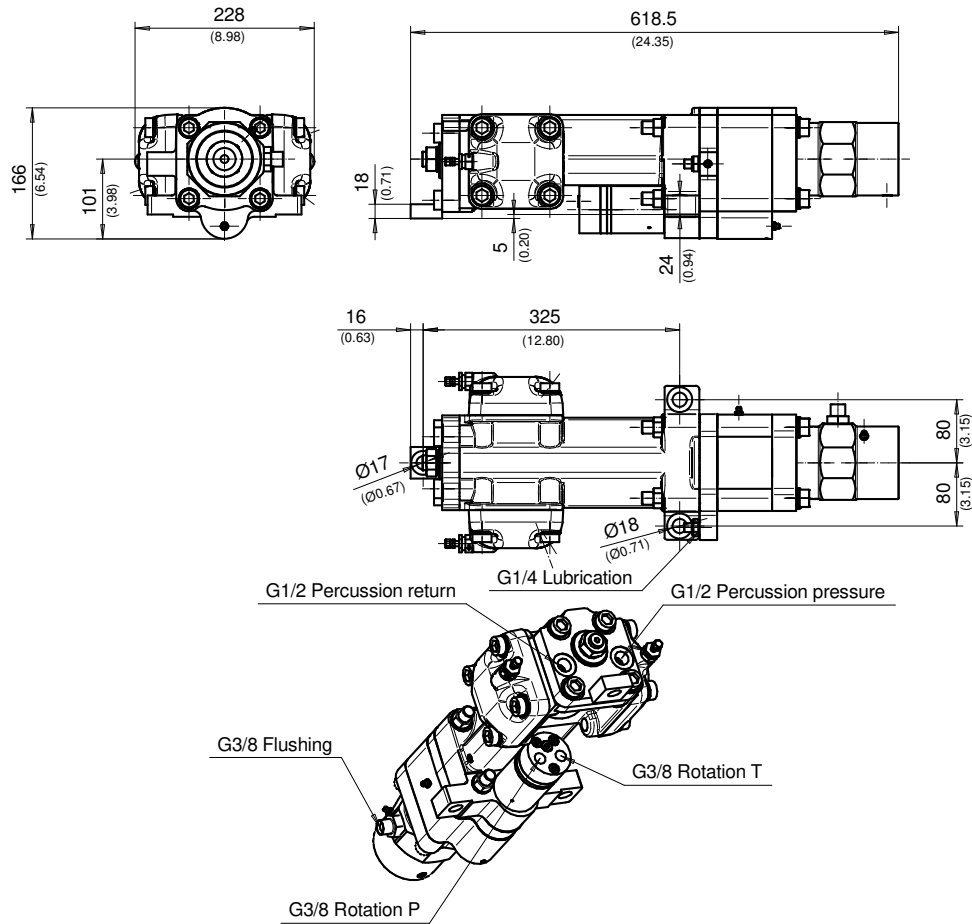
TECHNICAL SPECIFICATIONS

DOOFOR DF430X AND DF430S DRIFTERS

NOMINAL POWER CLASS		5 kW	6.7 hp
OPTIMAL MAXIMUM HOLE SIZE		41 mm	1 3/5"
PERCUSSION FLOW		45 l/min	12 gpm
PERCUSSION PRESSURE		120 bar	1740 psi
ROTATION MOTOR MAXIMUM FLOW ¹⁾	8cc	20 l/min	5.4 gpm
	12.5cc	25 l/min	6.6 gpm
	20cc	25 l/min	6.6 gpm
	32cc	25 l/min	6.6 gpm
	40cc	25 l/min	6.6 gpm
ROTATION TORQUE ¹⁾	8cc	41 Nm	30 lb-ft
	12.5cc	64 Nm	47 lb-ft
	20cc	97 Nm	71 lb-ft
	32cc	158 Nm	116 lb-ft
	40cc	194 Nm	143 lb-ft
ROTATION PRESSURE MAXIMUM		140 bar	2031 psi
ROTATION SPEED MAXIMUM	8cc	300 rpm	
	12.5cc	300 rpm	
	20cc	300 rpm	
	32cc	227 rpm	
	40cc	180 rpm	
LUBRICATION	Air-oil mist	125–200 g/h	4.9–7.8 fl oz/h (1.4–2.3 dl/h)
LUBRICATION PRESSURE		4–7 bar	58–101 psi
LUBRICATION AIR FLOW		200–300 l/min	53–79 gpm
FLUSHING AIR PRESSURE ¹⁾		5–8 bar	73–116 psi
FLUSHING AIR FLOW ¹⁾		700–1200 l/min	185–317 gpm
FLUSHING WATER PRESSURE ¹⁾		4–12 bar	58–174 psi
FLUSHING WATER FLOW ¹⁾		15–30 l/min	4–8 gpm
FLUSHING TEMPERATURE		3–30°C	37–86°F
RECOMMENDED MAXIMUM FEED FORCE		3.7 kN	830 lbf
OPTIMUM OIL OPERATING VISCOSITY		30–60 cSt	
MAXIMUM OPERATING OIL TEMPERATURE		70 °C	158 °F
WEIGHT	DF430F	50 kg	110 lb
	DF430S	50 kg	110 lb
SHANK SIZE	DF430F	Female 108mm [4 1/4"] * 22mm [7/8"], R23, R25, R28	
	DF430S	Male R23, R25, R32	

¹⁾ Intermittent value.

²⁾ Actual values vary according to drilling conditions and equipment.



DF500X HIGH-PERFORMANCE HYDRAULIC ROCK DRILL

Doofer DF500X is a high-power and high-frequency rock drill for general excavations, dimensional stone quarrying and other quarrying. The rock drill is equipped with a hexagonal female chuck. The rock drill uses air flushing.



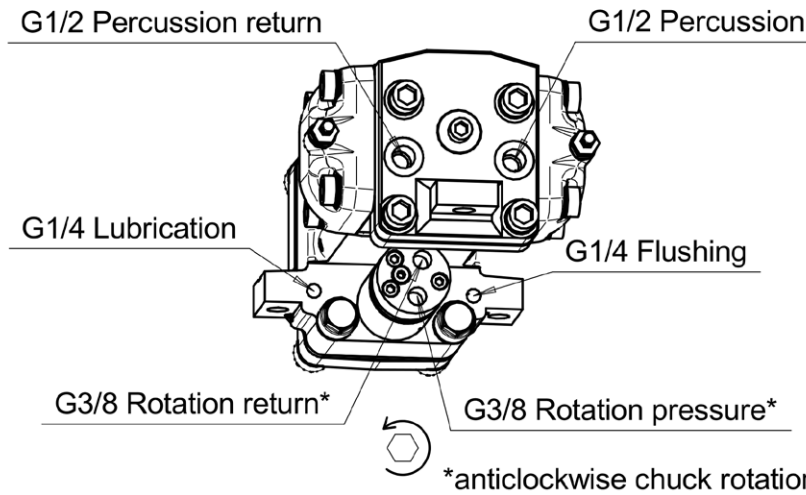
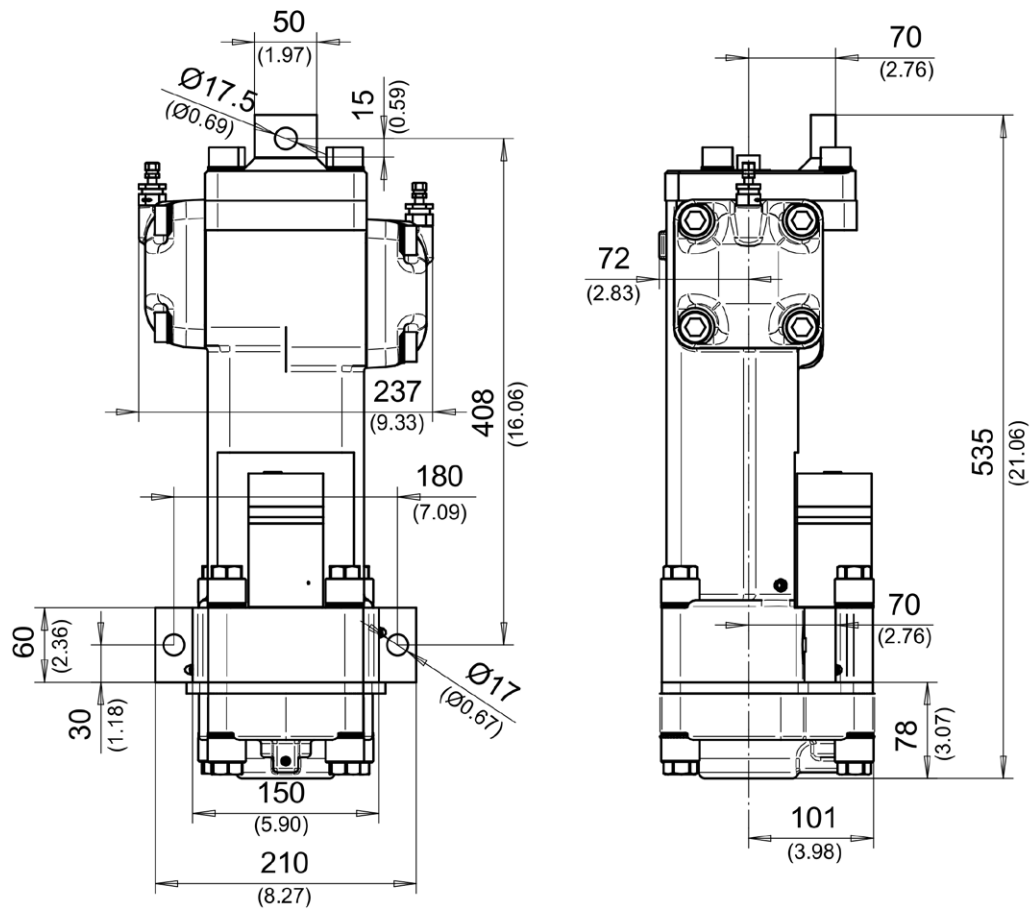
TECHNICAL SPECIFICATIONS

DOOFOR DF500X DRIFTER

NOMINAL POWER CLASS		10 kW	13.4 hp
OPTIMAL MAXIMUM HOLE SIZE		45 mm	1 3/4"
PERCUSSION FLOW		55–80 l/min	14.5–21.1 gpm
PERCUSSION PRESSURE		100–130 bar	1450–1885 psi
ROTATION MOTOR MAXIMUM FLOW ¹⁾	8cc	20 l/min	5.4 gpm
	12.5cc	25 l/min	6.6 gpm
	20cc	25 l/min	6.6 gpm
	32cc	25 l/min	6.6 gpm
	40cc	25 l/min	6.6 gpm
	50cc	25 l/min	6.6 gpm
ROTATION TORQUE ¹⁾	8cc	46 Nm	34 lb-ft
	12.5cc	70 Nm	52 lb-ft
	20cc	107 Nm	79 lb-ft
	32cc	177 Nm	131 lb-ft
	40cc	214 Nm	158 lb-ft
	50cc	269 Nm	198 lb-ft
ROTATION PRESSURE MAXIMUM		140 bar	2031 psi
ROTATION SPEED MAXIMUM	8cc	300 rpm	
	12.5cc	300 rpm	
	20cc	300 rpm	
	32cc	200 rpm	
	40cc	163 rpm	
	50cc	130 rpm	
LUBRICATION	Air-oil mist	125–200 g/h	4.9–7.8 fl oz/h (1.4–2.3 dl/h)
LUBRICATION PRESSURE		4–7 bar	58–101 psi
LUBRICATION AIR FLOW		200–300 l/min	53–79 gpm
FLUSHING AIR PRESSURE ¹⁾		5–7 bar	73–102 psi
FLUSHING AIR FLOW ¹⁾		700–1200 l/min	185–317 gpm
RECOMMENDED MAXIMUM FEED FORCE		6 kN	1348 lbf
MAXIMUM OPERATING OIL TEMPERATURE		70 °C	158 °F
WEIGHT		55 kg	121 lb
SHANK SIZE		108mm [4 1/4"] * 22mm [7/8"] or 25mm[1"]	

¹⁾ Intermittent value.

²⁾ Actual values vary according to drilling conditions and equipment.



Alternative model DF500S with male shank adapters and water flushing capability is also available.



DF530X HIGH-PERFORMANCE HYDRAULIC ROCK DRILL

Doofer DF530X is a new generation high-power and high-frequency rock drill for general excavations and quarrying. The rock drill is equipped with a hexagonal female chuck. The rock drill uses air or water flushing, high energy piston shape for good penetration speed in hard rock and good drill tool lifetime.



TECHNICAL SPECIFICATIONS

DOOFOR DF530X DRIFTER

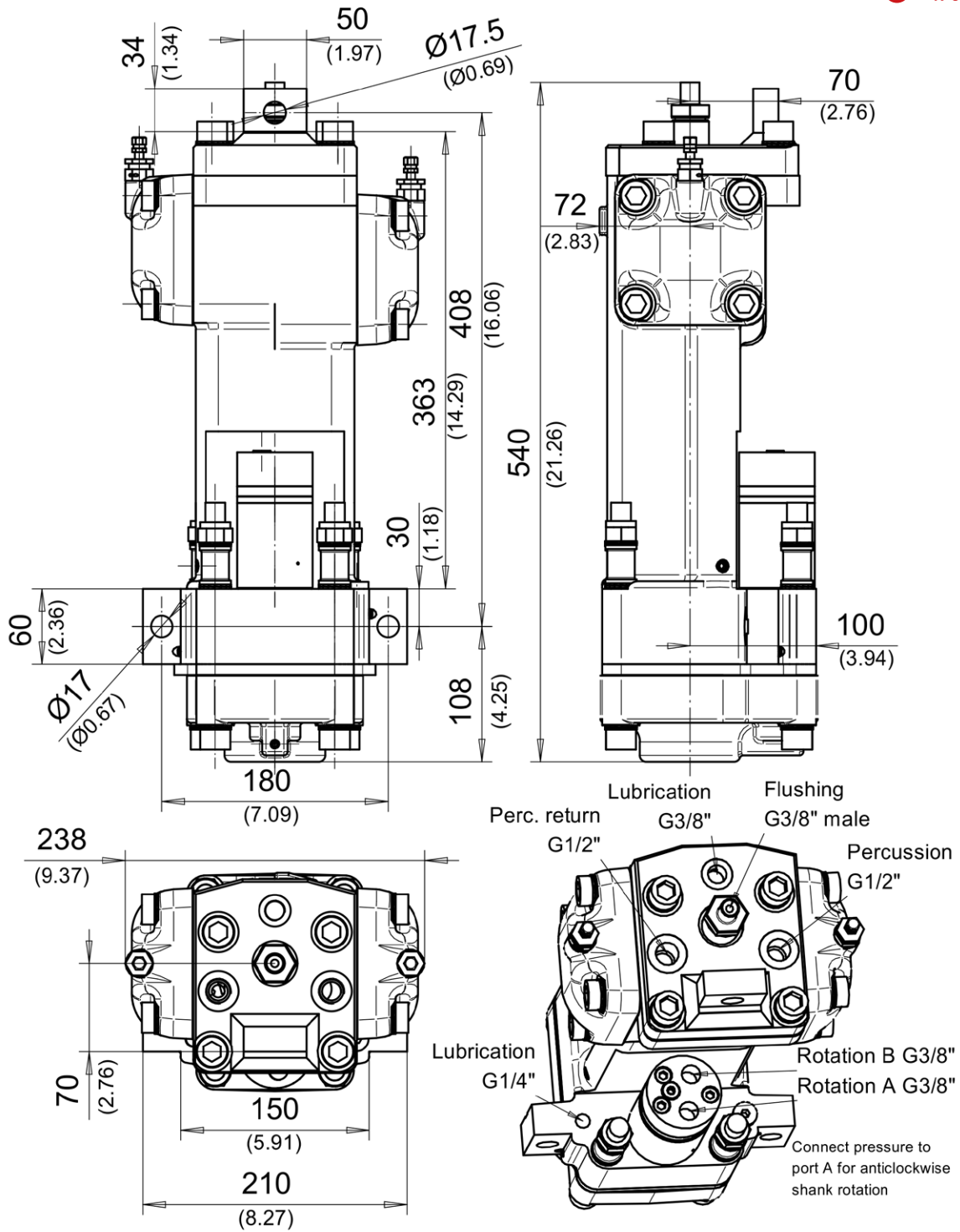
NOMINAL POWER CLASS		10 kW	13.4 hp
OPTIMAL MAXIMUM HOLE SIZE		45 mm	1 3/4"
PERCUSSION FLOW		45–55 l/min	11.9–14.5 gpm
PERCUSSION PRESSURE		100–130 bar	1450–1885 psi
ROTATION MOTOR MAXIMUM FLOW ¹⁾	8cc	20 l/min	5.4 gpm
	12.5cc	25 l/min	6.6 gpm
	20cc	25 l/min	6.6 gpm
	32cc	25 l/min	6.6 gpm
	40cc	25 l/min	6.6 gpm
	50cc	25 l/min	6.6 gpm
ROTATION TORQUE ¹⁾	8cc	46 Nm	34 lb-ft
	12.5cc	70 Nm	52 lb-ft
	20cc	107 Nm	79 lb-ft
	32cc	177 Nm	131 lb-ft
	40cc	214 Nm	158 lb-ft
	50cc	269 Nm	198 lb-ft
ROTATION PRESSURE MAXIMUM		140 bar	2031 psi
ROTATION SPEED MAXIMUM	8cc	300 rpm	
	12.5cc	300 rpm	
	20cc	300 rpm	
	32cc	200 rpm	
	40cc	163 rpm	
	50cc	130 rpm	
LUBRICATION	Air-oil mist	125–200 g/h	4.9–7.8 fl oz/h (1.4–2.3 dl/h)
LUBRICATION PRESSURE		4–7 bar	58–101 psi
LUBRICATION AIR FLOW		200–300 l/min	53–79 gpm
FLUSHING AIR PRESSURE ¹⁾		5–12 bar	73–174 psi
FLUSHING AIR FLOW ¹⁾		700–1200 l/min	185–317 gpm
FLUSHING WATER PRESSURE ¹⁾		5–12 bar	73–174 psi
FLUSHING WATER FLOW ¹⁾		25–40 l/min	6.6–10.6 gpm
FLUSHING TEMPERATURE		3–30°C	37–86°F
RECOMMENDED MAXIMUM FEED FORCE		6 kN	1348 lbf
MAXIMUM OPERATING OIL TEMPERATURE		70 °C	158 °F
WEIGHT		55 kg	121 lb

SHANK SIZE

¹⁾ Intermittent value.

²⁾ Actual values vary according to drilling conditions and equipment.

108mm [4 1/4"] * 22mm [7/8"] or 25mm[1"]



Alternative models for DF530X include DF530S with male shank adapter, DF530F with female shank adapter and DF530L with two side rotation motors for extra torque.





DF530F AND DF530L HIGH-PERFORMANCE HYDRAULIC ROCK DRILLS

Doofor DF530F combines sealed air or water flushing with female shank adapters. DF530L provides extra torque with two rotation motors and male shank adapters.

TECHNICAL

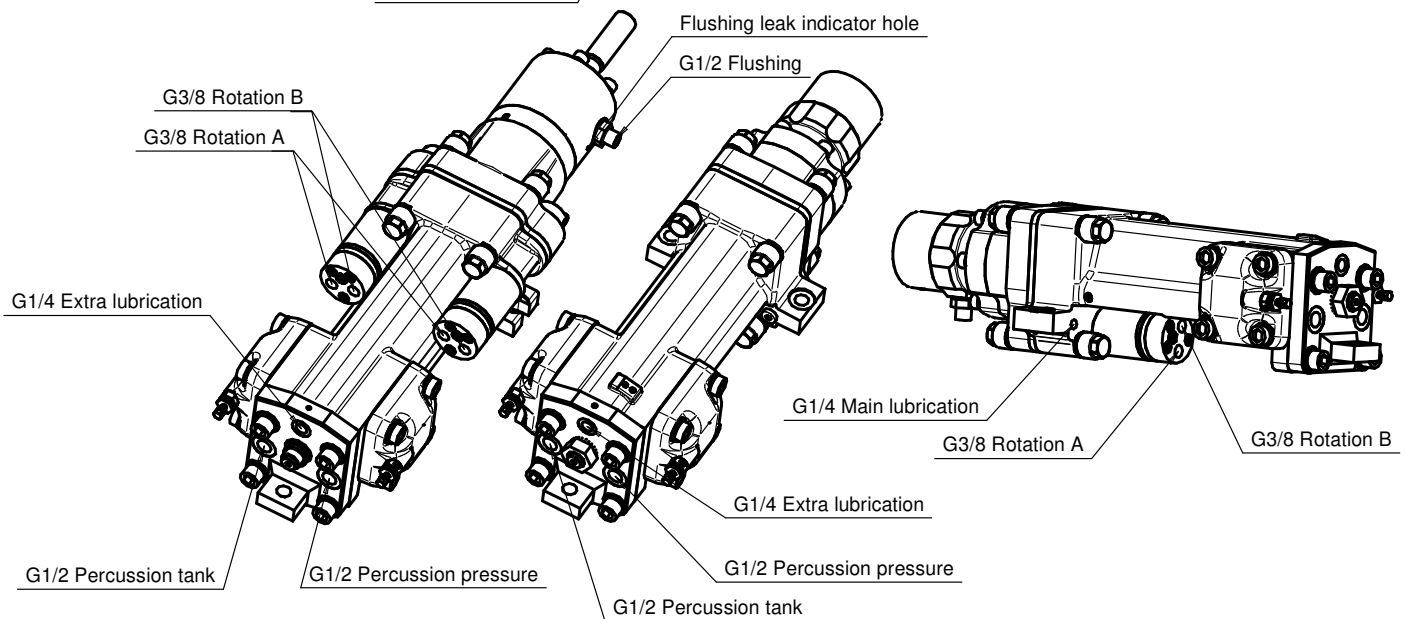
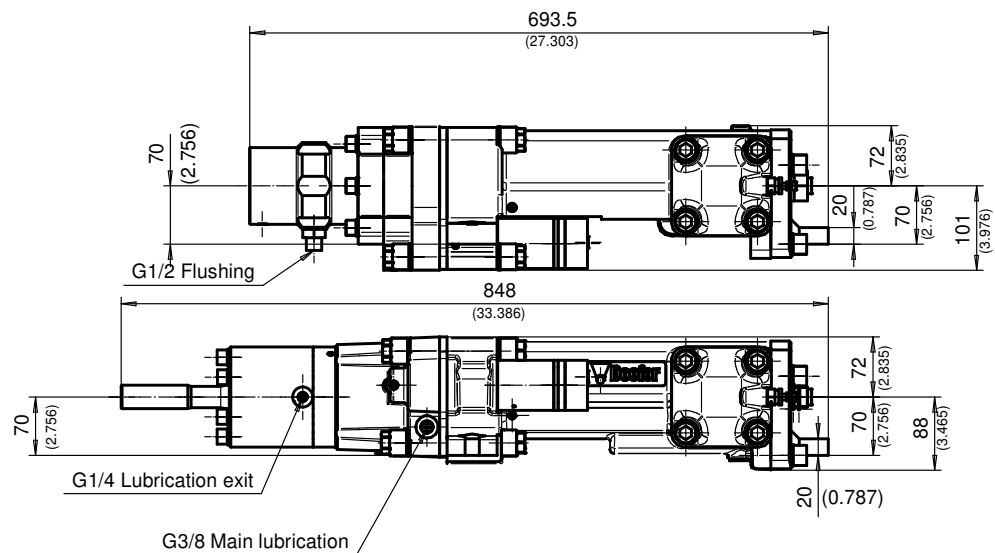
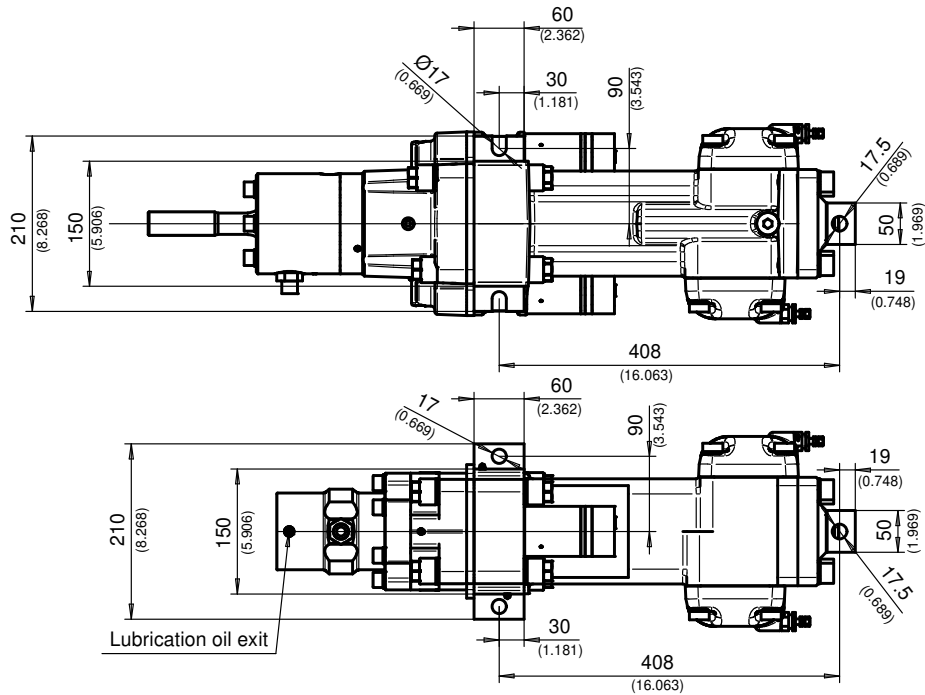
SPECIFICATIONS

DOOFOR DF530F AND DF530L DRIFTERS

NOMINAL POWER CLASS		10 kW	13.4 hp		
OPTIMAL MAXIMUM HOLE SIZE		45 mm	1 3/4"		
PERCUSSION FLOW		45–55 l/min	11.9–14.5 gpm		
PERCUSSION PRESSURE		100–130 bar	1450–1885 psi		
LUBRICATION	Air-oil mist	125–200 g/h	4.9–7.8 fl oz/h (1.4–2.3 dl/h)		
LUBRICATION PRESSURE		4–7 bar	58–101 psi		
LUBRICATION AIR FLOW		200–300 l/min	53–79 gpm		
FLUSHING AIR PRESSURE ¹⁾		5–12 bar	73–174 psi		
FLUSHING AIR FLOW ¹⁾		700–1200 l/min	185–317 gpm		
FLUSHING WATER PRESSURE ¹⁾		5–12 bar	73–174 psi		
FLUSHING WATER FLOW ¹⁾		25–40 l/min	6.6–10.6 gpm		
FLUSHING TEMPERATURE		3–30°C	37–86°F		
RECOMMENDED MAXIMUM FEED FORCE		6 kN	1348 lbf		
MAXIMUM OPERATING OIL TEMPERATURE		70 °C	158 °F		
SHANK SIZE	DF530F	Female 108mm [4 1/4"] * 22mm [7/8"], R23, R25, R28			
	DF530L	Male R28, R32 (R38, T38 in HD model)			
		DF530F	DF530L		
WEIGHT		65 kg	[145 lb]	83 kg	[183 lb]
ROTATION MOTOR MAXIMUM FLOW ¹⁾	12.5cc	25 l/min	[6.6 gpm]		
	20cc	25 l/min	[6.6 gpm]	2x 20cc	50 l/min (13.2 gpm)
	32cc	25 l/min	[6.6 gpm]	2x 32cc	50 l/min (13.2 gpm)
	40cc	25 l/min	[6.6 gpm]	2x 40cc	50 l/min (13.2 gpm)
	50cc	25 l/min	[6.6 gpm]	2x 50cc	50 l/min (13.2 gpm)
ROTATION TORQUE ¹⁾	12.5cc	70 Nm	[52 lb-ft]		
	20cc	107 Nm	[79 lb-ft]	2x 20cc	181 Nm [131 lb-ft]
	32cc	177 Nm	[131 lb-ft]	2x 32cc	295 Nm [218 lb-ft]
	40cc	214 Nm	[158 lb-ft]	2x 40cc	363 Nm [268 lb-ft]
	50cc	269 Nm	[198 lb-ft]	2x 50cc	456 Nm [336 lb-ft]
ROTATION SPEED MAXIMUM	12.5cc	300 rpm			
	20cc	300 rpm		2x 20cc	300 rpm
	32cc	200 rpm		2x 32cc	240 rpm
	40cc	163 rpm		2x 40cc	190 rpm
	50cc	130 rpm		2x 50cc	175 rpm
ROTATION PRESSURE MAXIMUM		140 bar	2031 psi		

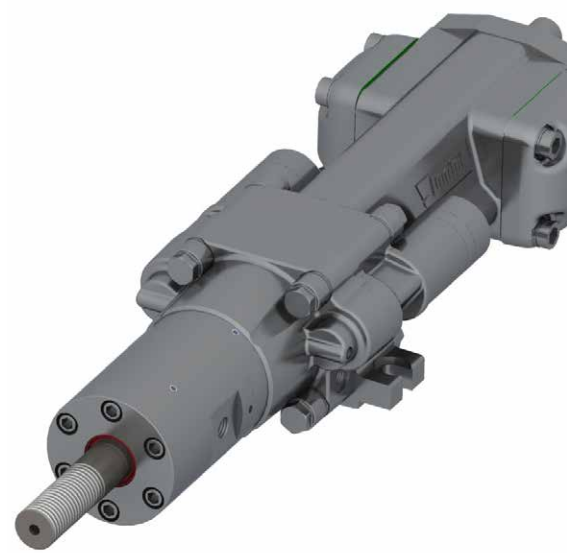
1) Intermittent value.

2) Actual values vary according to drilling conditions and equipment.



DF538L HIGH-PERFORMANCE HYDRAULIC ROCK DRILL

Doofer DF538L is a hydraulic drifter for general excavations, tunneling work, and mining. The drifter is designed for 38mm extension- and drifter rods. The Doofer DF538L has two rotation motors for high torque.



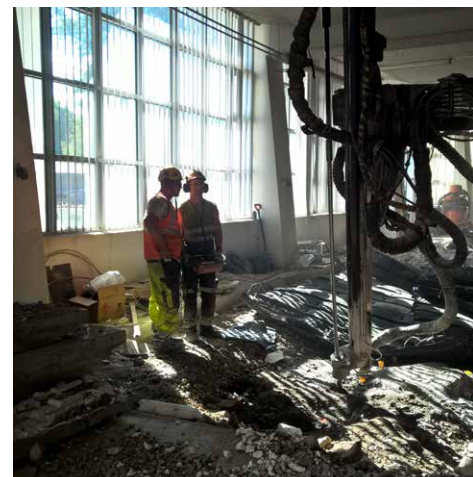
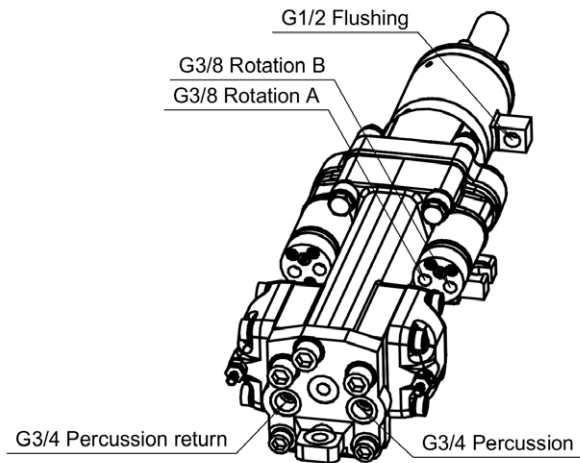
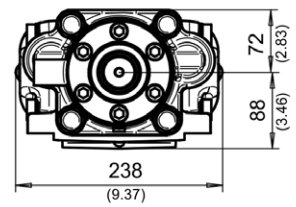
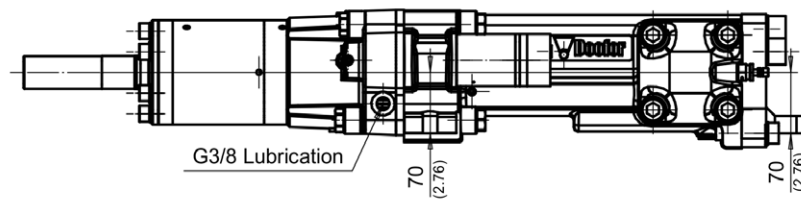
TECHNICAL SPECIFICATIONS

DOOFOR DF538L DRIFTER

NOMINAL POWER CLASS		13 kW	17.4 hp
OPTIMAL MAXIMUM HOLE SIZE		57 mm	2 1/4"
PERCUSSION FLOW		65–85 l/min	17–23 gpm
PERCUSSION PRESSURE		110–140 bar	1600–2050 psi
ROTATION MOTOR MAXIMUM FLOW ¹⁾	2x 20cc	50 l/min	13.2 gpm
	2x 32cc	50 l/min	13.2 gpm
	2x 40cc	50 l/min	13.2 gpm
	2x 50cc	50 l/min	13.2 gpm
ROTATION TORQUE ¹⁾	2x 20cc	181 Nm	131 lb-ft
	2x 30cc	295 Nm	218 lb-ft
	2x 40cc	363 Nm	268 lb-ft
	2x 50cc	456 Nm	336 lb-ft
ROTATION PRESSURE MAXIMUM		140 bar	2031 psi
ROTATION SPEED MAXIMUM	2x 20cc	300 rpm	
	2x 32cc	240 rpm	
	2x 40cc	190 rpm	
	2x 50cc	175 rpm	
LUBRICATION	Air-oil mist	150–250 g/h	5.9–9.8 fl oz/h (1.7–2.9 dl/h)
LUBRICATION PRESSURE		4–7 bar	58–101 psi
LUBRICATION AIR FLOW		200–300 l/min	53–79 gpm
FLUSHING AIR PRESSURE ¹⁾		5–10 bar	73–145 psi
FLUSHING AIR FLOW ¹⁾		1500–2500 l/min	396–660 gpm
FLUSHING WATER PRESSURE ¹⁾		4–12 bar	58–174 psi
FLUSHING WATER FLOW ¹⁾		30–40 l/min	8–11 gpm
FLUSHING TEMPERATURE		3–30°C	37–86°F
RECOMMENDED MAXIMUM FEED FORCE		10 kN	2250 lbf
MAXIMUM OPERATING OIL TEMPERATURE		70 °C	158 °F
WEIGHT		83 kg	183 lb
SHANK SIZE		R32, R38, T38	

¹⁾ Intermittent value.

²⁾ Actual values vary according to drilling conditions and equipment.



DF540L HIGH-PERFORMANCE HYDRAULIC ROCK DRILL

Doofer DF540L is a hydraulic rock drill designed for bolting, general excavations, and underground production drilling. It has a very low overhead, only 82.5mm from the center line. The rotation motor of the DF540L can be installed on the right-hand or the left-hand side. Flushing media can be water or air. Optimized internal oil flow construction effectively preserves hydraulic power.



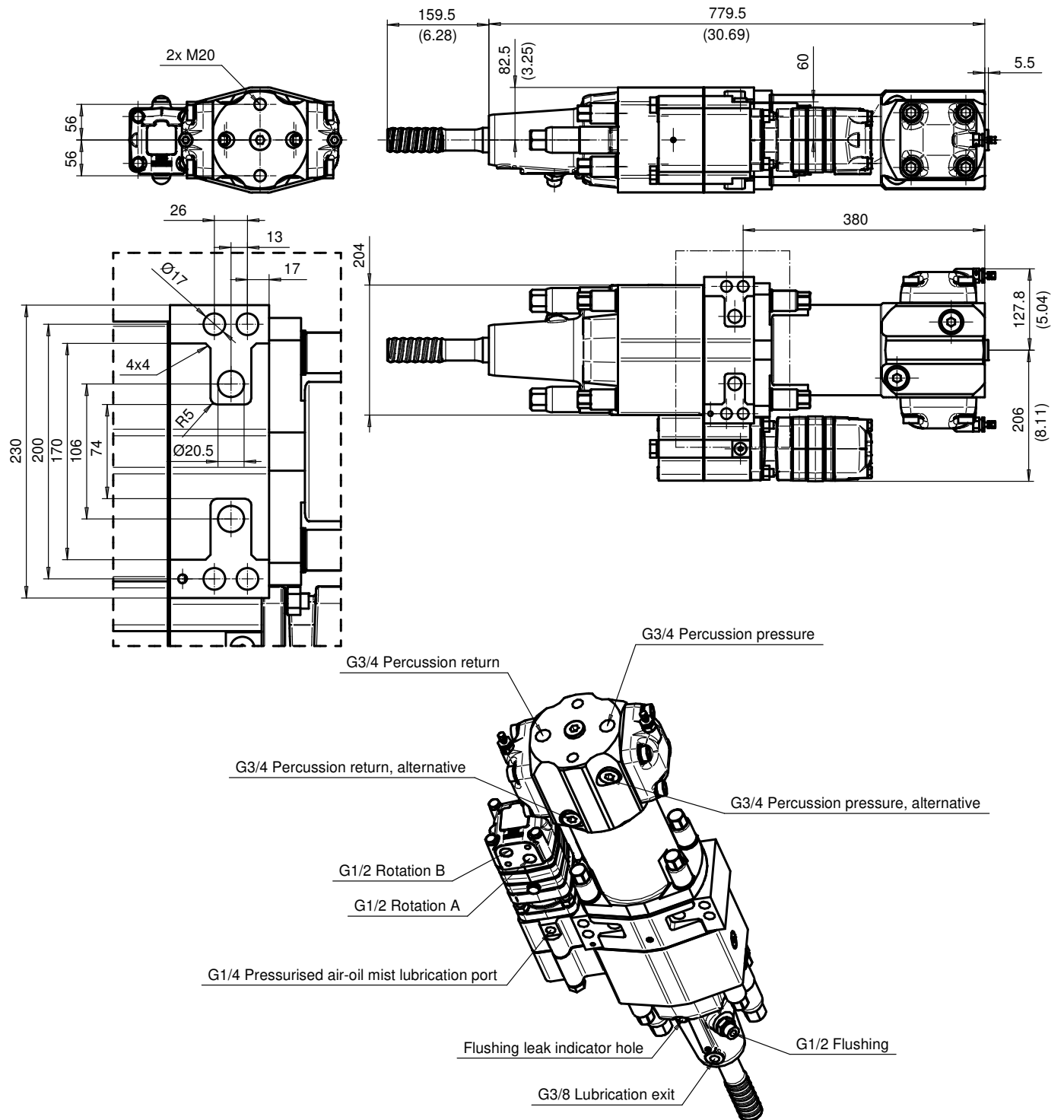
TECHNICAL SPECIFICATIONS

DOOFOR DF540L DRIFTER

NOMINAL POWER CLASS		14 kW	18.8 hp
OPTIMAL MAXIMUM HOLE SIZE		64 mm	2 1/2"
PERCUSSION FLOW		90 l/min	23.8 gpm
PERCUSSION PRESSURE		140 bar	2030 psi
ROTATION MOTOR MAXIMUM FLOW ¹⁾	80cc	80 l/min	21.1 gpm
	125cc	90 l/min	23.8 gpm
	160cc	90 l/min	23.8 gpm
ROTATION TORQUE ¹⁾	80cc	504 Nm	372 lb-ft
	125cc	796 Nm	587 lb-ft
	160cc	975 Nm	719 lb-ft
ROTATION PRESSURE MAXIMUM		175 bar	2540 psi
ROTATION SPEED MAXIMUM	80cc	250 rpm	
	125cc	250 rpm	
	160cc	250 rpm	
LUBRICATION	Air-oil mist	200–300 g/h	7.8–11.7 fl oz/h (2.3–3.5 dl/h)
LUBRICATION PRESSURE		4–7 bar	58–101 psi
LUBRICATION AIR FLOW		200–300 l/min	53–79 gpm
FLUSHING AIR PRESSURE ¹⁾		5–7 bar	73–101 psi
FLUSHING AIR FLOW ¹⁾		4000 l/min	1057 gpm
FLUSHING WATER FLOW ¹⁾		150 l/min	39.6 gpm
FLUSHING TEMPERATURE		3–30°C	37–86°F
RECOMMENDED MAXIMUM FEED FORCE		15 kN	3372 lbf
OPTIMUM OIL OPERATING VISCOSITY		30–60 cSt	
MAXIMUM OPERATING OIL TEMPERATURE		70 °C	158 °F
WEIGHT		131 kg	289 lb
SHANK SIZE		R32, R38, T38	

¹⁾ Intermittent value.

²⁾ Actual values vary according to drilling conditions and equipment.



DF540L can be equipped with BLT, EXT- and 2M options.



DF550L HIGH-PERFORMANCE HYDRAULIC ROCK DRILL

Doofer DF550L is a high-frequency hydraulic rock drill specially designed for underground production drilling and tunneling. The DF550L has a very low overhead, only 84mm from the drill center line. The rotation motor of the DF550L can be installed on the right-hand or the left-hand side. The rock drill can use air or water flushing.



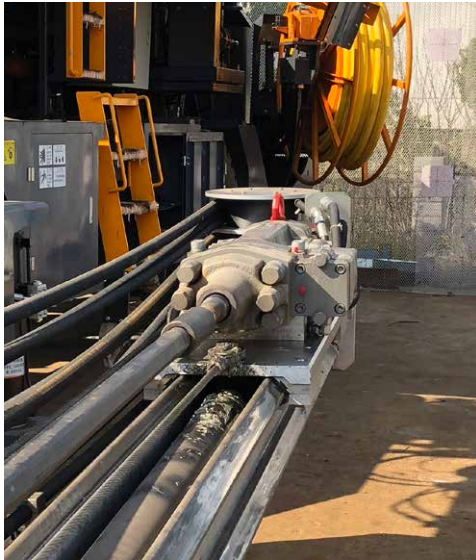
TECHNICAL SPECIFICATIONS

DOOFOR DF550L DRIFTER

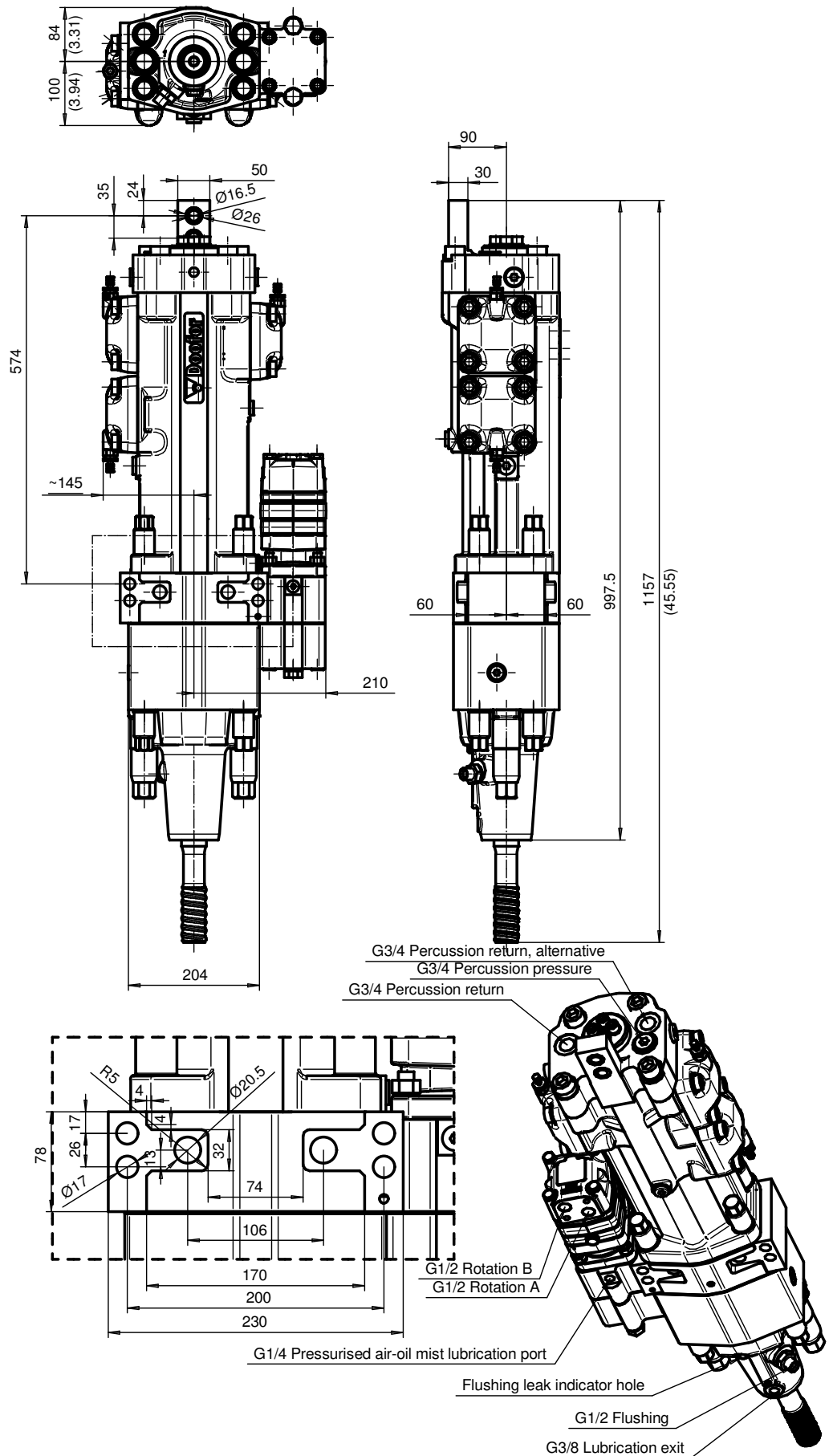
NOMINAL PERCUSSION POWER		17 kW	22.8 hp
OPTIMAL MAXIMUM HOLE SIZE		76 mm	3"
PERCUSSION FLOW		90–120 l/min	23.8–31.7 gpm
PERCUSSION PRESSURE		80–160 bar	1160–2321 psi
ROTATION MOTOR MAXIMUM FLOW ¹⁾	80cc	80 l/min	21.1 gpm
	100cc	90 l/min	23.8 gpm
	125cc	90 l/min	23.8 gpm
	160cc	90 l/min	23.8 gpm
	200cc	90 l/min	23.8 gpm
ROTATION TORQUE ¹⁾	80cc	504 Nm	372 lb-ft
	100cc	634 Nm	468 lb-ft
	125cc	796 Nm	587 lb-ft
	160cc	975 Nm	719 lb-ft
	200cc	1170 Nm	863 lb-ft
ROTATION PRESSURE MAXIMUM		175 bar	2540 psi
ROTATION SPEED MAXIMUM	80cc	250 rpm	
	100cc	250 rpm	
	125cc	250 rpm	
	160cc	250 rpm	
	200cc	225 rpm	
LUBRICATION	Air-oil mist	200–300 g/h	7.8–11.7 fl oz/h (2.3–3.5 dl/h)
LUBRICATION PRESSURE		6–7 bar	87–101 psi
LUBRICATION AIR FLOW		200–300 l/min	53–79 gpm
FLUSHING AIR PRESSURE ¹⁾		5–7 bar	73–101 psi
FLUSHING AIR FLOW ¹⁾		4000 l/min	1057 gpm
FLUSHING WATER FLOW ¹⁾		50–150 l/min	13–40 gpm
FLUSHING TEMPERATURE		3–30°C	37–86°F
RECOMMENDED MAXIMUM FEED FORCE		15 kN	3372 lbf
MAXIMUM OPERATING OIL TEMPERATURE		70 °C	158 °F
WEIGHT		151 kg	333 lb
SHANK SIZE		R32, R38, T38, T45	

¹⁾ Intermittent value.

²⁾ Actual values vary according to drilling conditions and equipment.



DIMENSIONS



DF550L can be equipped with BLT, EXT- and 2M options.

DF560L HIGH-PERFORMANCE HYDRAULIC ROCK DRILL

Doofer DF560L is a high-frequency hydraulic rock drill specially designed for underground production drilling and tunneling. The DF560L has a very low overhead, only 84mm from the drill center line. The rotation motor of the DF560L can be installed on the right hand or the left hand side. The rock drill uses air or water flushing.



TECHNICAL SPECIFICATIONS

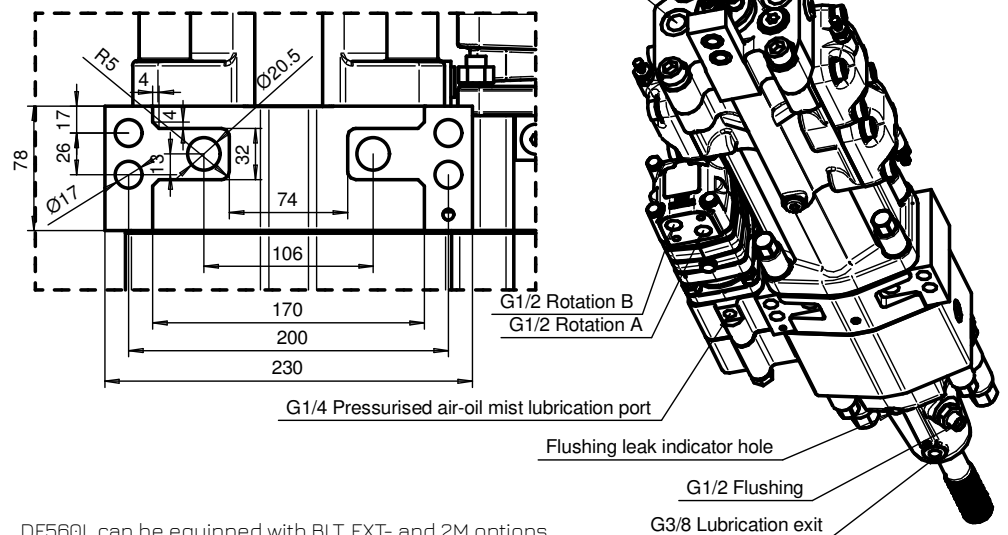
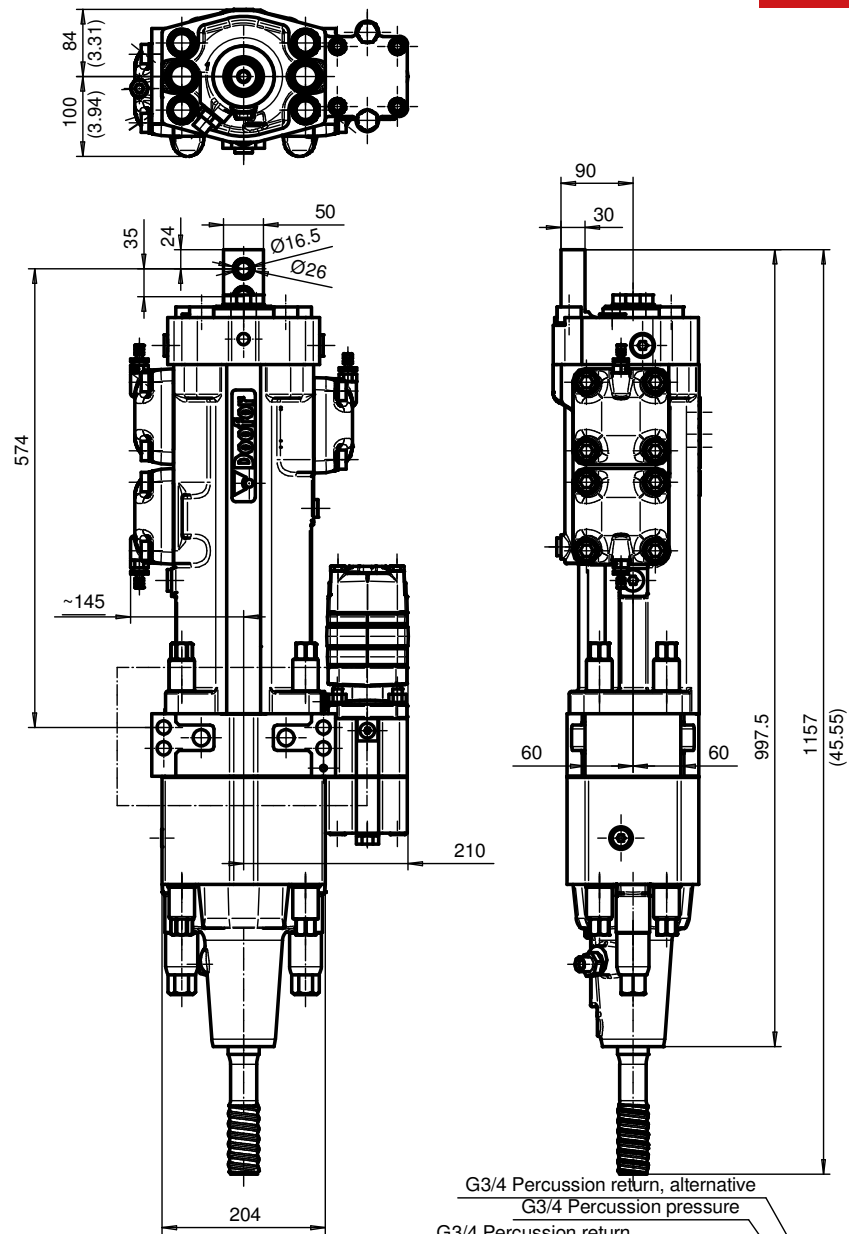
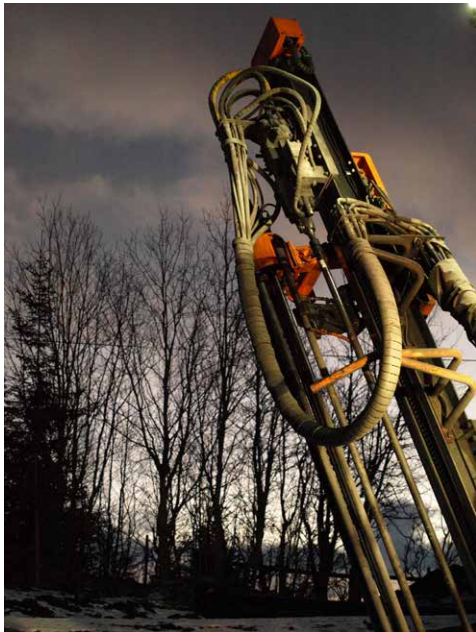
DOOFOR DF560L DRIFTER

NOMINAL PERCUSSION POWER		20 kW	26.8 hp
OPTIMAL MAXIMUM HOLE SIZE		89 mm	3 1/2"
PERCUSSION FLOW		110–130 l/min	29.1–34.3 gpm
PERCUSSION PRESSURE		80–150 bar	1160–2176 psi
ROTATION MOTOR MAXIMUM FLOW ¹⁾	80cc	80 l/min	21.1 gpm
	100cc	90 l/min	23.8 gpm
	125cc	90 l/min	23.8 gpm
	160cc	90 l/min	23.8 gpm
	200cc	90 l/min	23.8 gpm
ROTATION TORQUE ¹⁾	80cc	504 Nm	372 lb-ft
	100cc	634 Nm	468 lb-ft
	125cc	796 Nm	587 lb-ft
	160cc	975 Nm	719 lb-ft
	200cc	1170 Nm	863 lb-ft
ROTATION PRESSURE MAXIMUM		175 bar	2540 psi
ROTATION SPEED MAXIMUM	80cc	250 rpm	
	100cc	250 rpm	
	125cc	250 rpm	
	160cc	250 rpm	
	200cc	225 rpm	
LUBRICATION	Air-oil mist	200–300 g/h	7.8–11.7 fl oz/h (2.3–3.5 dl/h)
LUBRICATION PRESSURE		6–7 bar	87–101 psi
LUBRICATION AIR FLOW		200–300 l/min	53–79 gpm
FLUSHING AIR PRESSURE ¹⁾		5–7 bar	73–101 psi
FLUSHING AIR FLOW ¹⁾		4000 l/min	1057 gpm
FLUSHING WATER FLOW ¹⁾		50–150 l/min	13–40 gpm
FLUSHING TEMPERATURE		3–30°C	37–86°F
RECOMMENDED MAXIMUM FEED FORCE		15 kN	3372 lbf
MAXIMUM OPERATING OIL TEMPERATURE		70 °C	158 °F
WEIGHT		151 kg	333 lb
SHANK SIZE		R32, R38, T38, T45	

¹⁾ Intermittent value.

²⁾ Actual values vary according to drilling conditions and equipment.

DIMENSIONS



DF560L can be equipped with BLT, EXT- and 2M options.

2M OPTION FOR HIGH TORQUE WITH TWO ROTATION MOTORS

2M option replaces the gear box with two rotation motor version. It can be attached to the DF540L, DF550L and DF560L rock drills. The option improves the performance of the rock drill by increasing rotation torque.

2M-option can be combined with BLT- and EXT-options.

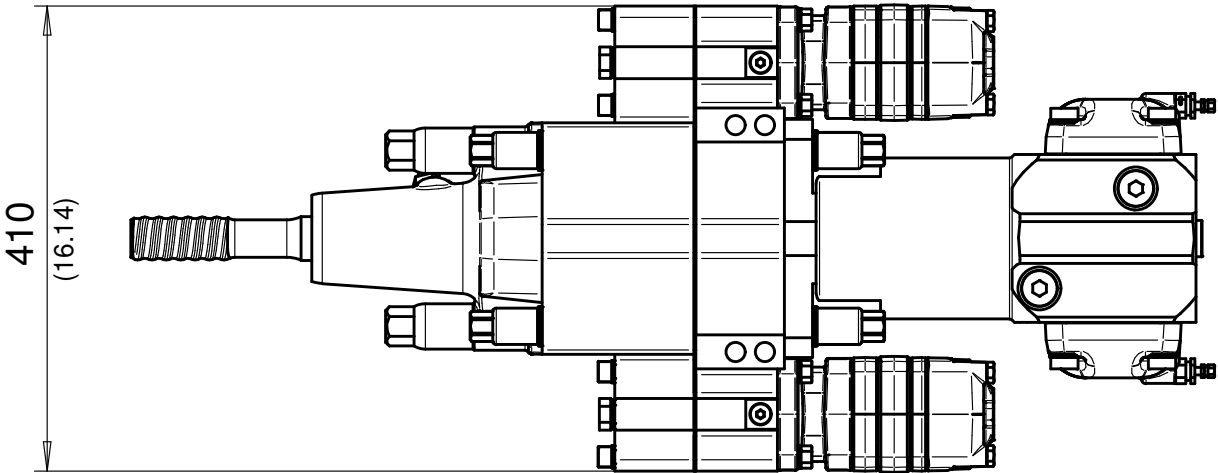
TECHNICAL

SPECIFICATIONS

2M OPTION FOR DF540L, DF550L AND DF560L

ROTATION MOTOR MAXIMUM FLOW ¹⁾	2x 80cc	160 l/min	42.2 gpm
	2x 125cc	180 l/min	47.6 gpm
	2x 160cc	180 l/min	47.6 gpm
ROTATION TORQUE ¹⁾	2x 80cc	1008 Nm	744 lb-ft
	2x 125cc	1592 Nm	1174 lb-ft
	2x 160cc	1950 Nm	1438 lb-ft
ROTATION PRESSURE MAXIMUM		175 bar	2540 psi
ROTATION MOTOR MAXIMUM FLOW	2x 80cc	250 rpm	
	2x 125cc	250 rpm	
	2x 160cc	250 rpm	

¹⁾ Intermittent value.

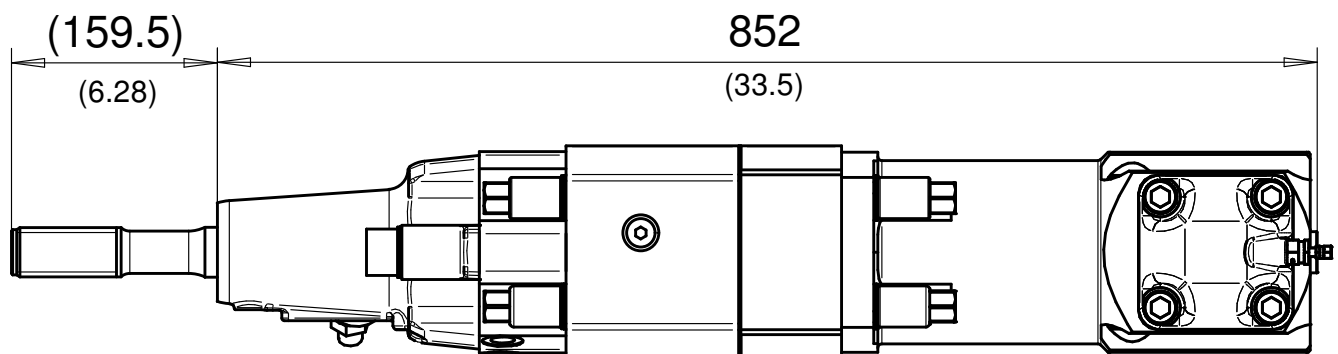


EXT OPTION FOR IMPROVED PERFORMANCE

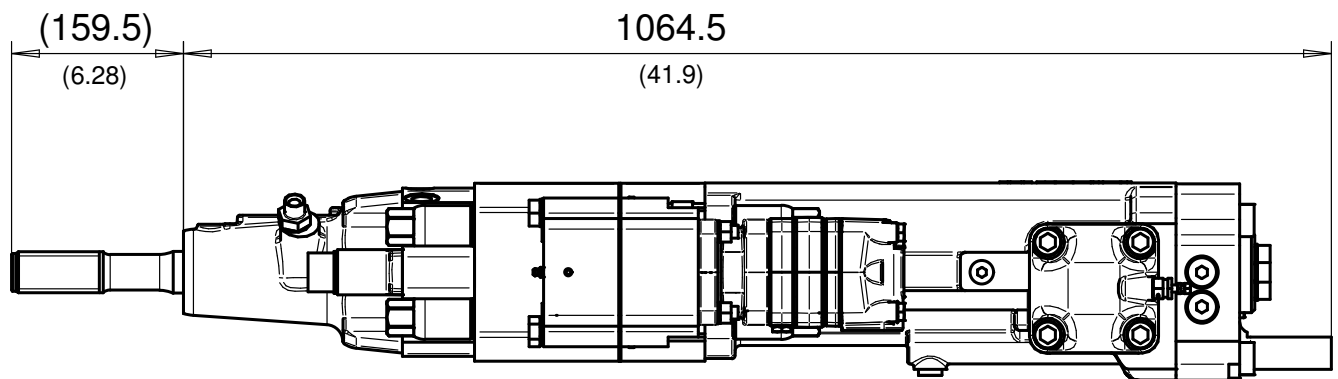
EXT-option attaches extractor (back hammer) to the rock drill. The extractor lifts the shank adapter back to the striking point, enabling more efficient removal of stuck drill steels from the rock and opening of the threads of lines of drill bars in extension bar drilling.

EXT-option is available for DF540L, DF550L and DF560L with standard flushing head. It can be used together with two-motor 2M-option.

EXT OPTION FOR DF540L



EXT OPTION FOR DF550L AND DF560L



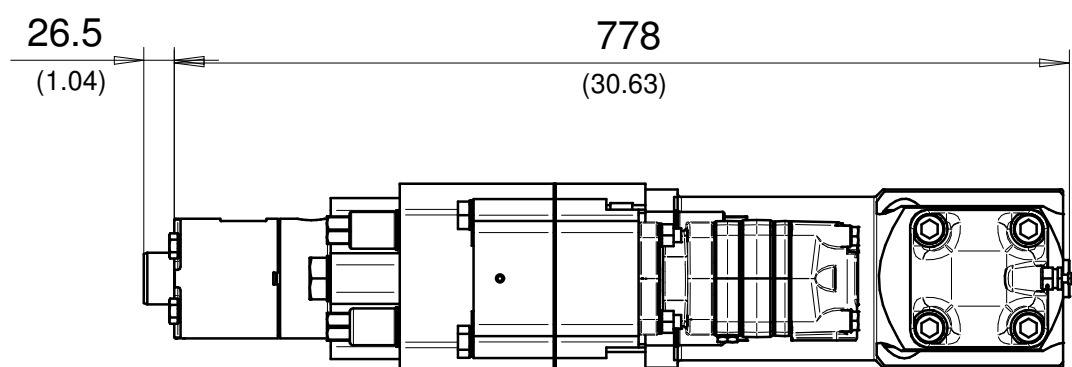
BLT OPTION FOR BOLTING AND GROUTING



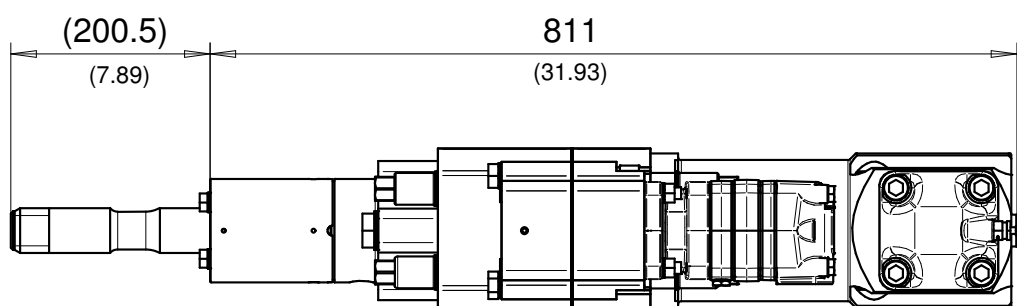
BLT-option changes the flushing head of the rock drill. It has three basic variants: short flushing head for bolting, long flushing head with extra seals and special grouting flushing head. BLT flushing heads can also be used for tunneling and general excavations.

The BLT-option can be used with DF540L, DF550L and DF560L rock drills. It can be used together with 2M-option. The BLT-option requires special shank adapters. Short flushing head can use female R32 shank adapter.

BLT OPTION FOR DF540L



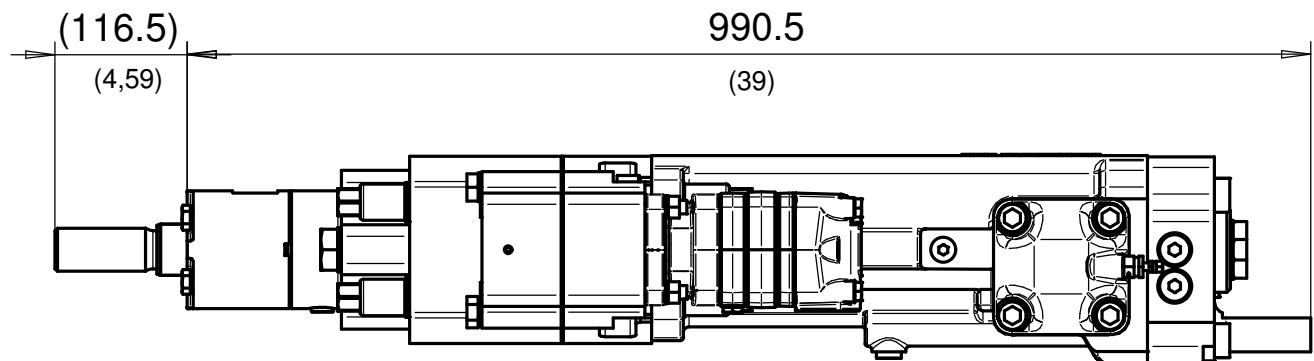
Short variant.



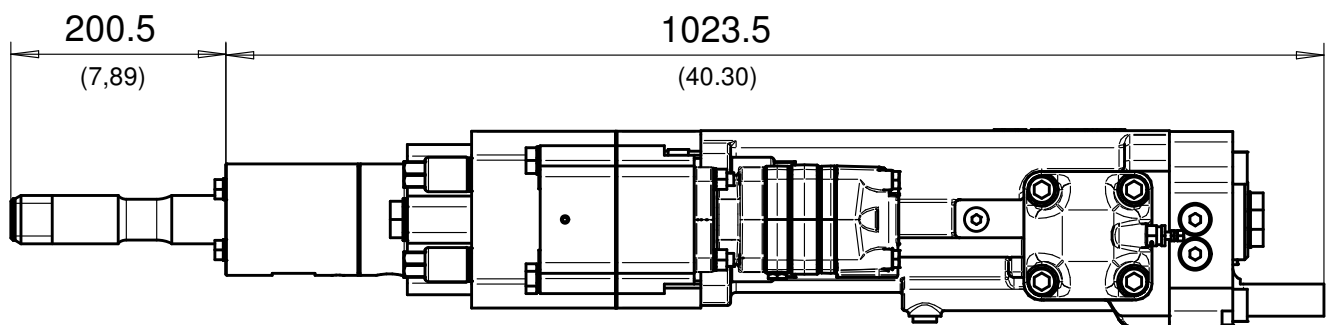
Long / grouting variant.



BLT OPTION FOR DF550L AND DF560L



Short variant.



Long / grouting variant.

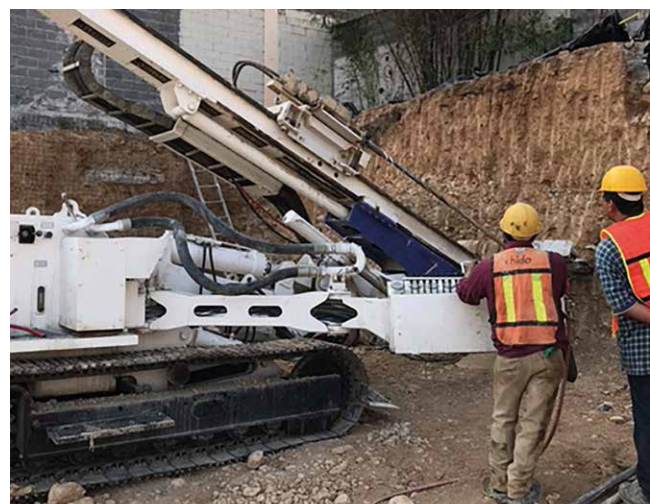
TECHNICAL SPECIFICATIONS

BLT OPTION SHANK ADAPTERS

BLT (SHORT VARIANT)	Male R32, R38, T38 and female R32
BLT (LONG AND GROUTING VARIANTS)	Male R32, R38, T35, T38 and T45

FLUSHING SEALS

STANDARD	3+1
BLT (SHORT VARIANT)	3+2
BLT (LONG AND GROUTING VARIANTS)	4+2



DF800-SERIES HIGH-PERFORMANCE HYDRAULIC ROCK DRILLS

The newcomer of the Doofer rock drill family, the Doofer DF800 is a next-generation high-frequency hydraulic rock drill. The drill has two versions, the DF800L and DF800S. With rotation motor on the left or on the right side, the DF800L has a low overhead of 100mm from the drill center line. The DF800S version has motor on the top side of the drill.

Patented percussion channeling minimizes the number of parts requiring service and makes this rock drill one of the peak products in power to weight ratio. With modular design the rock drill is one of the easiest and effortless rock drills in the market to service. The rock drill has hydraulic cushioning and extractor as standard features. Protected by various patents.



TECHNICAL SPECIFICATIONS

DOOFOR DF800 DRIFTERS

NOMINAL MAXIMUM PERCUSSION POWER		25 kW	34 hp
OPTIMAL MAXIMUM HOLE SIZE		127 mm	5"
PERCUSSION FLOW AT 140 BAR / 2030 PSI		130 l/min	34.3 gpm
RECOMMENDED PERCUSSION PRESSURE		140–150 bar (int. 170 bar)	2030–2176 psi (int. 2465 psi)
ROTATION MOTOR MAXIMUM FLOW ¹⁾	200cc	90 l/min	23.8 gpm
	250cc ³⁾	90 l/min	23.8 gpm
	315cc	90 l/min	23.8 gpm
	400cc	90 l/min	23.8 gpm
ROTATION TORQUE ¹⁾	200cc	1067 Nm	787 lb-ft
	250cc ³⁾	1288 Nm	950 lb-ft
	315cc	1509 Nm	1113 lb-ft
	400cc	1803 Nm	1330 lb-ft
ROTATION PRESSURE MAXIMUM ¹⁾		225 bar	3263 psi
ROTATION SPEED MAXIMUM ²⁾	200cc	200 rpm	
	250cc ³⁾	160 rpm	
	315cc	128 rpm	
	400cc	101 rpm	
LUBRICATION	Air-oil mist	300–500 g/h	11.7–17.9 fl oz/h (3.5–5.3 dl/h)
LUBRICATION PRESSURE		4–7 bar	58–101 psi
LUBRICATION AIR FLOW		400–500 l/min	105–132 gpm
FLUSHING AIR PRESSURE ⁴⁾		7–10 bar	101–145 psi
FLUSHING AIR FLOW ⁴⁾		6000–15000 l/min	1600–4000 gpm
FLUSHING WATER FLOW ⁴⁾		100–300 l/min	26–80 gpm
FLUSHING TEMPERATURE		3–30°C	37–86°F
RECOMMENDED MAXIMUM FEED FORCE		20 kN	4490 lbf
MAXIMUM OPERATING OIL TEMPERATURE		70 °C	158 °F
WEIGHT		229 kg	504 lb
SHANK SIZE		T38, T45, T51 (Other sizes possible)	

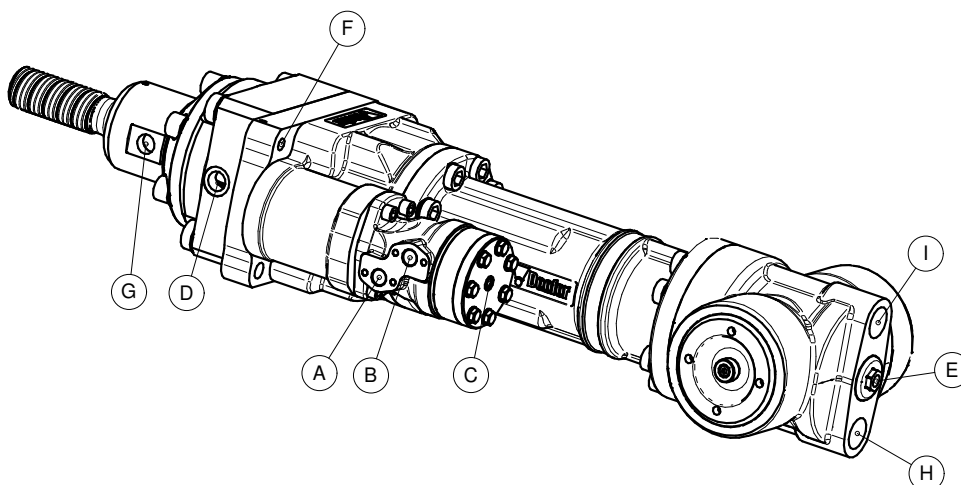
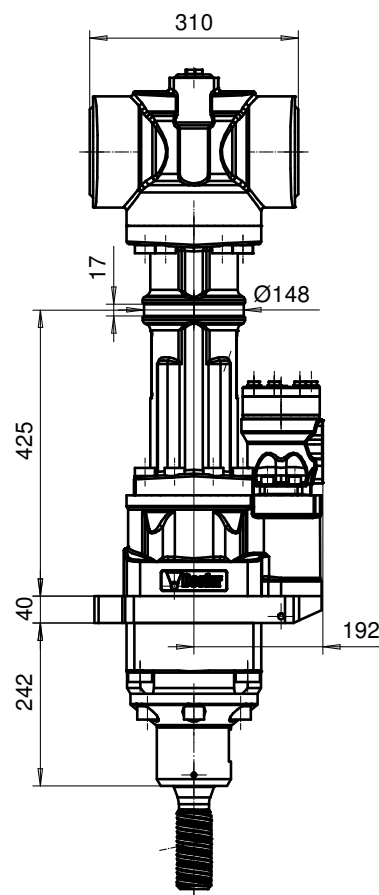
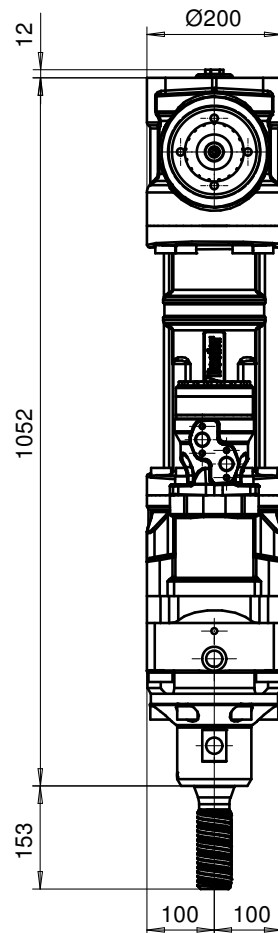
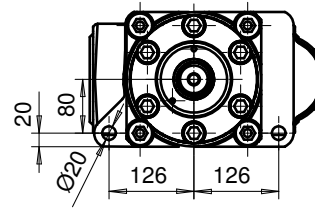
¹⁾ Intermittent value.

²⁾ Continuous operation values.

³⁾ 250cc motor recommended.

⁴⁾ Value highly dependent on drilling conditions.

DIMENSIONS



- A G1/2 Rotation A.
- B G1/2 Rotation B.
- C G1/4 Rotation drain (optional).
- D G3/4 Extractor boost and alternative percussion pressure.
- E G3/8 Breathing, line to F.
- F G3/8 Lubrication and line to E.
- G G3/4 Flushing.
- H G1 1/4 Percussion (Pressure).
- I G1 1/4 Percussion (Return).

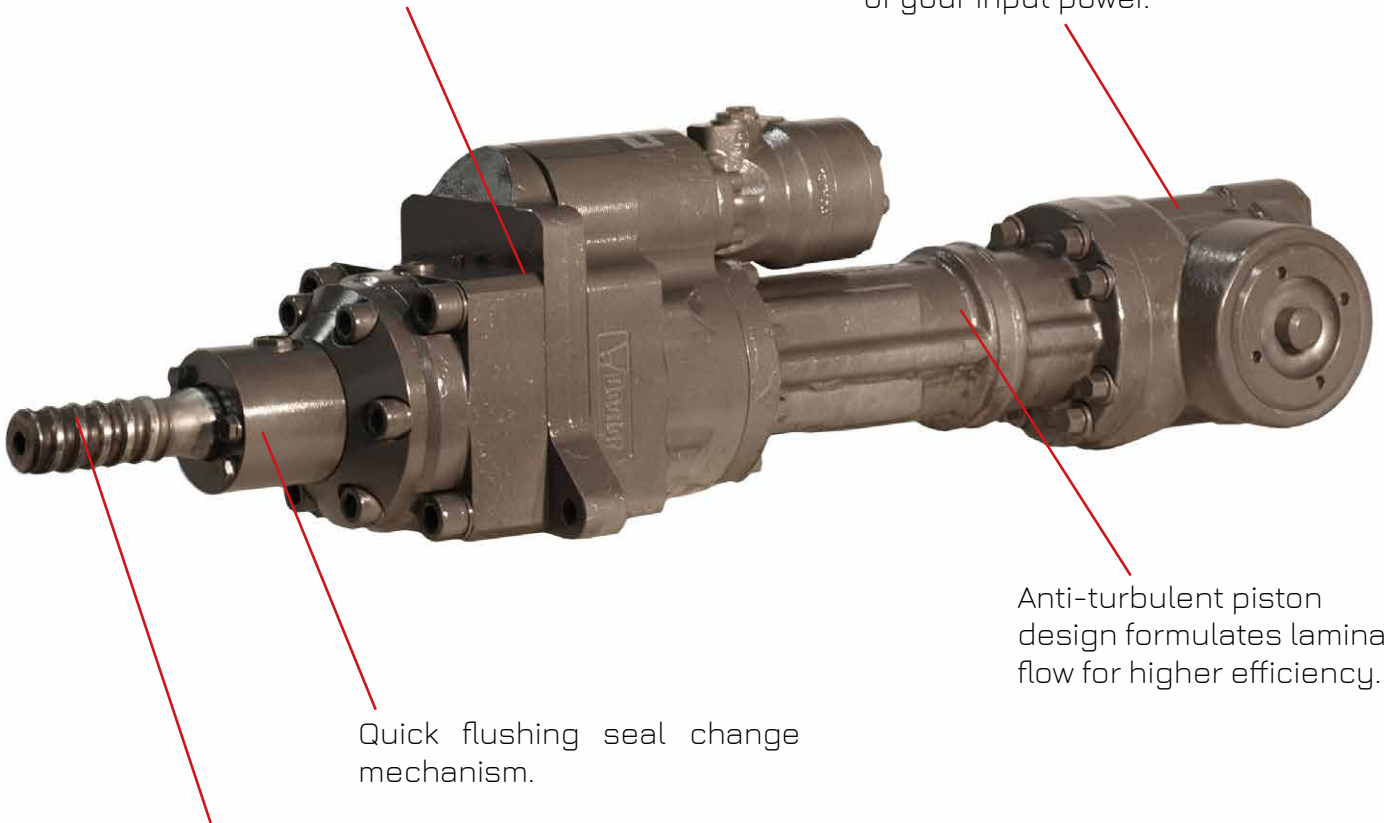
DF800-SERIES **HIGH-PERFORMANCE HYDRAULIC ROCK DRILLS**

DF800 has a number of next-generation features, which improve your drilling capability and make the maintenance of the drill effortless and easy.



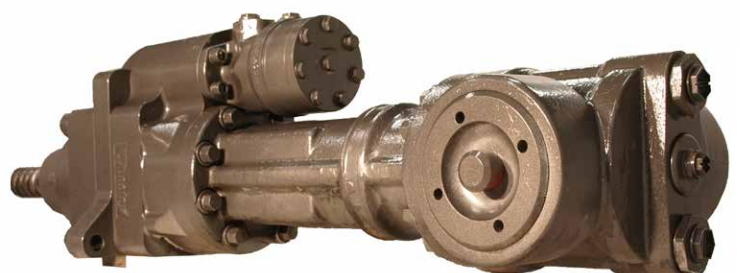
Cushioning and extractor as standard features for gaining excellent drill steel life.

Optimized internal oil flow construction makes most of your input power.



Durable T38, T45 and T51 shank adapters.

SUPER FAST DRILLING SPEED!





DOOFOR FEED SYSTEM COMPONENT KIT

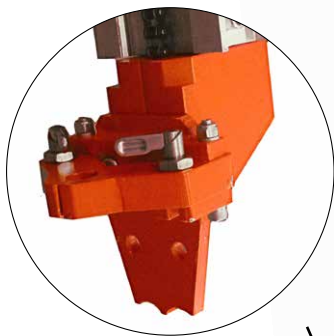
Doofor offers a set of supporting components for customers, who wish to build their own drill feed. For example, base machines for the drill feed can be excavators, mini-loaders and skid steer loaders. All components can be purchased individually or left out if necessary.



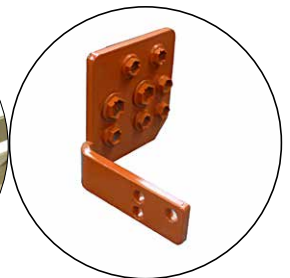
Standard option:
Durable machined carriage plates and hydraulic, pneumatic and manually operated drill steel retainers.



Standard option:
Robust chain drive for feed. Motor with brake and counterbalance valve system.



Standard option:
Openable or fixed rod guide in various sizes for your drilling needs.



Extra options:

- Protective cage
- Hose bracket
- Lubricator for the rock drill
- Excavator mounting bracket
- Hydraulic air compressor
- Hydraulic control system component set

Doofor drilling attachment kit is suitable for rock drills under 100 kg (220 lb).



 **Doofor**
ROCK DRILLS





WWW.DOOFOR.COM

TALTTAKATU 8
FI-37150 NOKIA, **FINLAND**
TEL. +358 3 343 0747
INFORMATION@DOOFOR.FI