



DOOFOR INC. THE COMPANY

Enhance your drilling solution with Doofor rock drills

Doofor Inc. designs and manufactures world renown rock drills, original spare parts, and supporting components, such as drilling feed systems and carriage plates. Doofor guarantees drilling technology of the highest quality which promises to improve the overall functionality of your drill rig unit.

Our unique rock drills are designed to endure the most demanding environments and maintain superior performance in extreme working conditions. As a pioneer in the drilling industry, we have successfully integrated valuable industry knowhows into our products to maximize drilling speed and efficiency.

DOOFOR INC. PRODUCTS

Competitive Doofor rock drills use the latest technology and components of the highest quality which offer multiple benefits. It is an honor to provide only the best and most advanced solutions available, with long-term benefits such as good drill steel economy and efficient lubrication. Modern, self-developed high-frequency technology enables fast-penetration levels with less stress delivered to the drill tool. Patented trapezoid piston technology improves the percussion mechanism and enhances shock wave transmission, resulting in better economic efficiency.

Doofor high-performance hydraulic rock drills are compact, universal and can be installed in any drilling platform, including hydraulic drill rigs, drill jumbos, etc. Customizable Doofor solutions provide freedom for boom structure and easier retrofitting. In addition to rock drills, Doofor offers aluminum profiles and hydraulic feed system component kits for OEMs and machine building professionals.

Your partner of choice from product development to end-user service

Doofor's state-of-the-art technology ensures stability in performance and minimal interruptions to your business operations. Our highly skilled workforce and subcontracting network ensures good lead times and flexibility. Doofor works closely with customers and end-users in finding the most durable and economical solutions.

As a trusted Nordic provider, Doofor offers spare parts availability, maintenance, training, fast-delivery service, as well as ongoing technical and commercial support. Doofor also offers tailorized solutions to meet the specific requirements of your drill rig.



FROM NOKIA, FINLAND **WITH DEDICATION**

Unique Doofor drills are known as powerful, reliable, and durable worldwide.
We ship to all continents and base our business on long term customer partnerships.
We specialize solely on the development of hydraulic rock drills.
Our business is to enhance yours.

DF430X HIGH-PERFORMANCE HYDRAULIC ROCK DRILL

Doofer DF430X is a lightweight, high-frequency hydraulic rock drill designed for use in general excavations, quarrying and bolting operations. Flushing media can be air or water. This rock drill has a female hexagonal chuck. Simple design allows for easy serviceability.

This model can be used with a Doofer original drill feed system component kit.



TECHNICAL

SPECIFICATIONS

DOOFOR DF430X DRIFTER

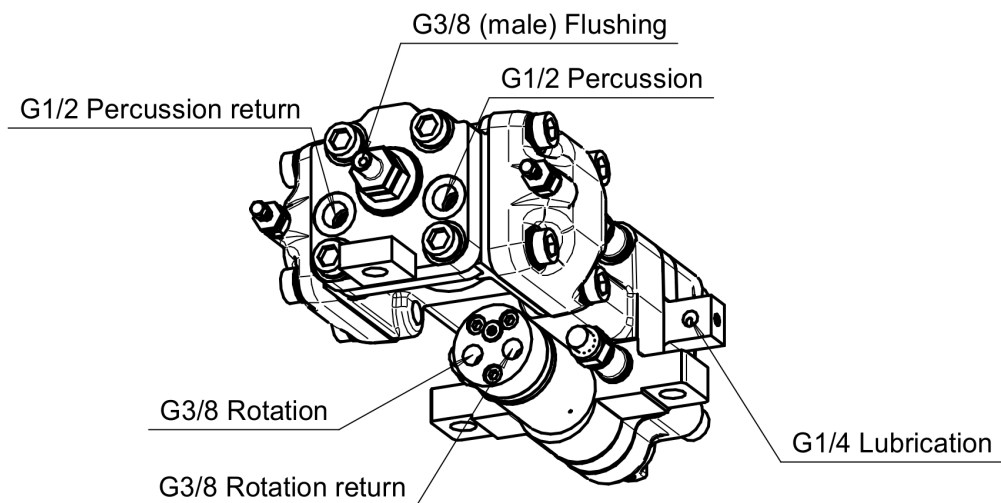
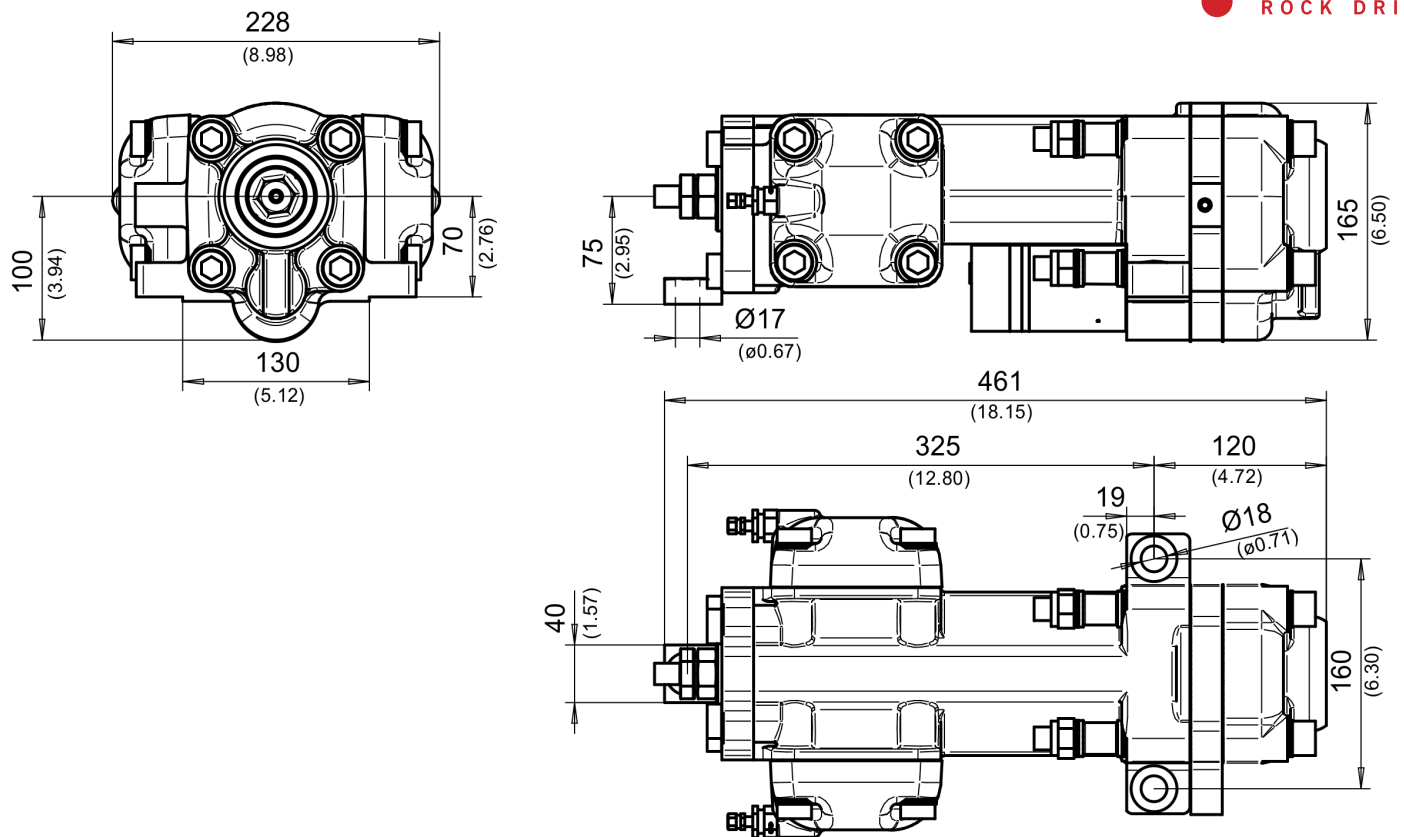
NOMINAL POWER CLASS		5 kW	6.7 hp
OPTIMAL MAXIMUM HOLE SIZE		41 mm	1 3/5"
PERCUSSION FLOW		45 l/min	12 gpm
PERCUSSION PRESSURE		120 bar	1740 psi
ROTATION MOTOR MAXIMUM FLOW ¹⁾	8cc	20 l/min	5.4 gpm
	12.5cc	25 l/min	6.6 gpm
	20cc	25 l/min	6.6 gpm
	32cc	25 l/min	6.6 gpm
	40cc	25 l/min	6.6 gpm
ROTATION TORQUE ¹⁾	8cc	41 Nm	30 lb-ft
	12.5cc	64 Nm	47 lb-ft
	20cc	97 Nm	71 lb-ft
	32cc	158 Nm	116 lb-ft
	40cc	194 Nm	143 lb-ft
ROTATION PRESSURE MAXIMUM		140 bar	2031 psi
ROTATION SPEED MAXIMUM ²⁾	8cc	300 rpm	
	12.5cc	300 rpm	
	20cc	300 rpm	
	32cc	227 rpm	
	40cc	180 rpm	
LUBRICATION	Air-oil mist	125–200 g/h	4.9–7.8 fl oz/h (1.4–2.3 dl/h)
LUBRICATION PRESSURE		4–7 bar	58–101 psi
LUBRICATION AIR FLOW		200–300 l/min	53–79 gpm
FLUSHING AIR PRESSURE ³⁾		5–8 bar	73–116 psi
FLUSHING AIR FLOW ³⁾		700–1200 l/min	185–317 gpm
FLUSHING WATER PRESSURE ³⁾		4–12 bar	58–174 psi
FLUSHING WATER FLOW ³⁾		15–30 l/min	4–8 gpm
RECOMMENDED MAXIMUM FEED FORCE		3.7 kN	830 lbf
WEIGHT		41 kg	90 lb
SHANK SIZE		108mm [4 1/4"] * 22mm [7/8"] or 25mm[1"]	

1) Intermittent value.

2) Continuous value. Maximum recommended speed 300 rpm.

3) Actual values vary according to drilling conditions and equipment.

DIMENSIONS



Doofor DF430X has alternative models: Doofor DF430S with a male shank adapter, versatile Doofor DF430F with a female shank adapter and light piston models Doofor DF420X and Doofor DF410X. New model DF430XS combines male or female shank adapters with short overall length.



DF430F AND DF430S

HIGH-PERFORMANCE

HYDRAULIC ROCK DRILLS



Doofoor DF430F and DF430S are lightweight, high-frequency rock drills designed for use in general excavations, quarrying and bolting.

DF430F combines sealed air or water flushing system with female shank adapters. DF430S uses male shank adapters with air or water flushing. Both models are easy to maintain due to compact, modular design.

Both models can be used with a Doofoor original drill feed system component kit.

TECHNICAL SPECIFICATIONS

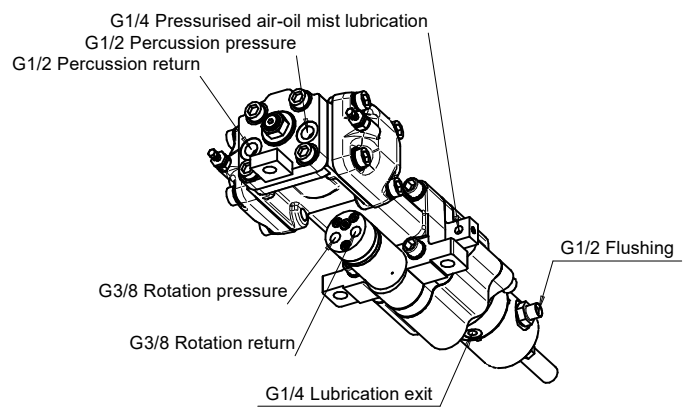
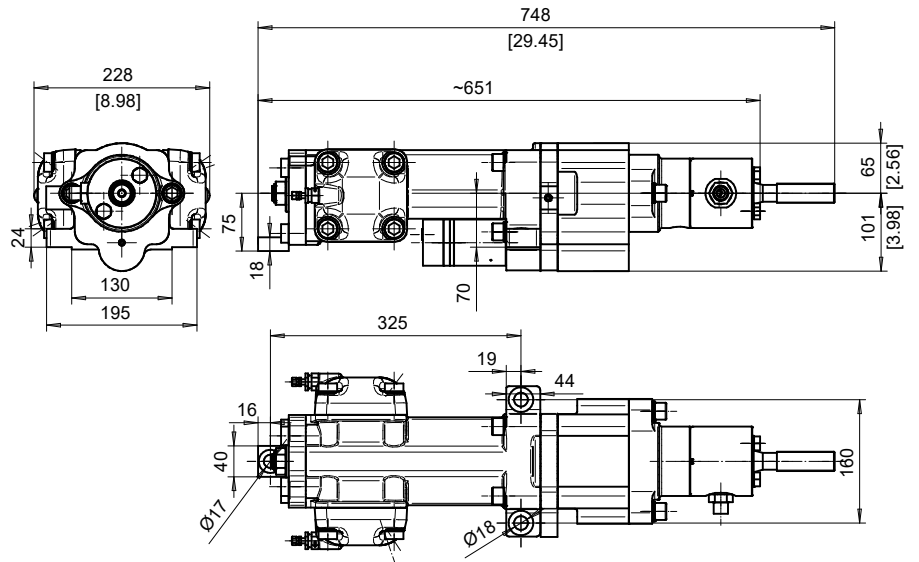
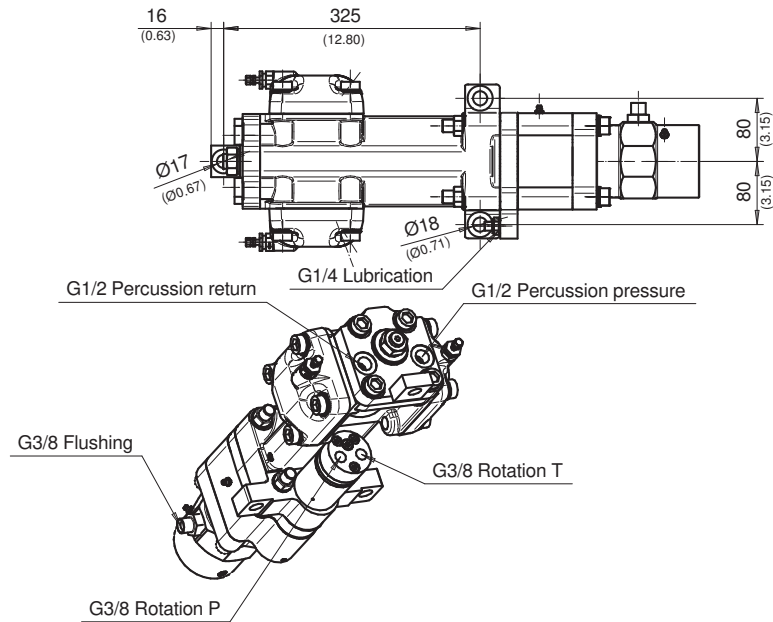
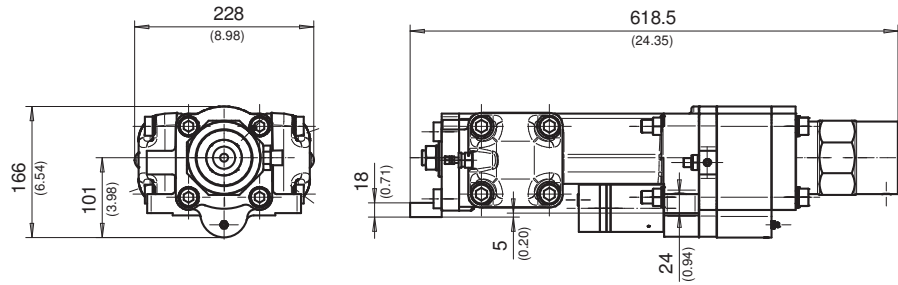
DOOFOR DF430F AND DF430S DRIFTERS

NOMINAL POWER CLASS		5 kW	6.7 hp
OPTIMAL MAXIMUM HOLE SIZE		41 mm	1 3/5"
PERCUSSION FLOW		45 l/min	12 gpm
PERCUSSION PRESSURE		120 bar	1740 psi
ROTATION MOTOR MAXIMUM FLOW ¹⁾	8cc	20 l/min	5.4 gpm
	12.5cc	25 l/min	6.6 gpm
	20cc	25 l/min	6.6 gpm
	32cc	25 l/min	6.6 gpm
	40cc	25 l/min	6.6 gpm
ROTATION TORQUE ¹⁾	8cc	41 Nm	30 lb-ft
	12.5cc	64 Nm	47 lb-ft
	20cc	97 Nm	71 lb-ft
	32cc	158 Nm	116 lb-ft
	40cc	194 Nm	143 lb-ft
ROTATION PRESSURE MAXIMUM		140 bar	2031 psi
ROTATION SPEED MAXIMUM ²⁾	8cc	300 rpm	
	12.5cc	300 rpm	
	20cc	300 rpm	
	32cc	227 rpm	
	40cc	180 rpm	
LUBRICATION	Air-oil mist	125-200 g/h	4.9-7.8 fl oz/h (1.4-2.3 dl/h)
LUBRICATION PRESSURE		4-7 bar	58-101 psi
LUBRICATION AIR FLOW		200-300 l/min	53-79 gpm
FLUSHING AIR PRESSURE ³⁾		5-8 bar	73-116 psi
FLUSHING AIR FLOW ³⁾		700-1200 l/min	185-317 gpm
FLUSHING WATER PRESSURE ³⁾		4-12 bar	58-174 psi
FLUSHING WATER FLOW ³⁾		15-30 l/min	4-8 gpm
RECOMMENDED MAXIMUM FEED FORCE		3.7 kN	830 lbf
WEIGHT	DF430F	50 kg	110 lb
	DF430S	50 kg	110 lb
SHANK SIZE	DF430F	Female 108mm [4 1/4"] * 22mm [7/8"], R25, R28 and R32	
	DF430S	Male R25, R28	

1) Intermittent value.

2) Continuous value. Maximum recommended speed 300 rpm.

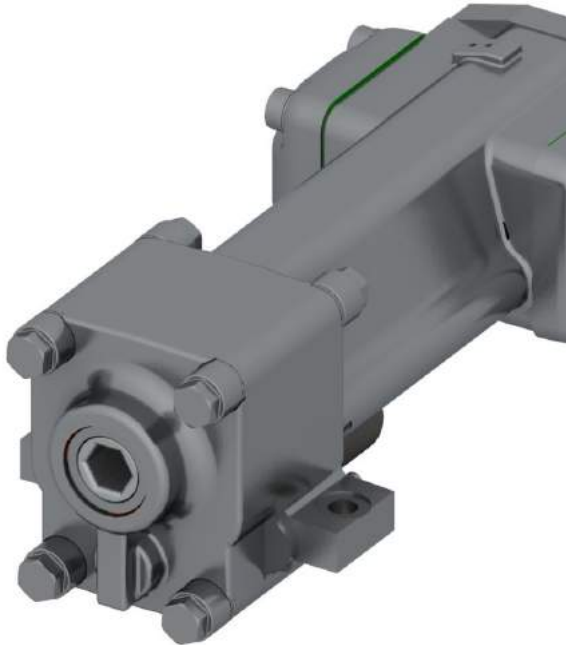
3) Actual values vary according to drilling conditions and equipment.



DF500X HIGH-PERFORMANCE HYDRAULIC ROCK DRILL

Doofer DF500X is a high-power and high-frequency rock drill used for general excavations, dimensional stone quarrying and other quarrying. DF500X is equipped with a hexagonal female chuck. This rock drill uses air flushing only. DF500X is highly versatile due to its geometry and size and can be fitted with Doofer original carriage plates and a choice of hydraulic, pneumatic, or mechanical steel retainers.

This model can be used with a Doofer original drill feed system component kit.



TECHNICAL

SPECIFICATIONS

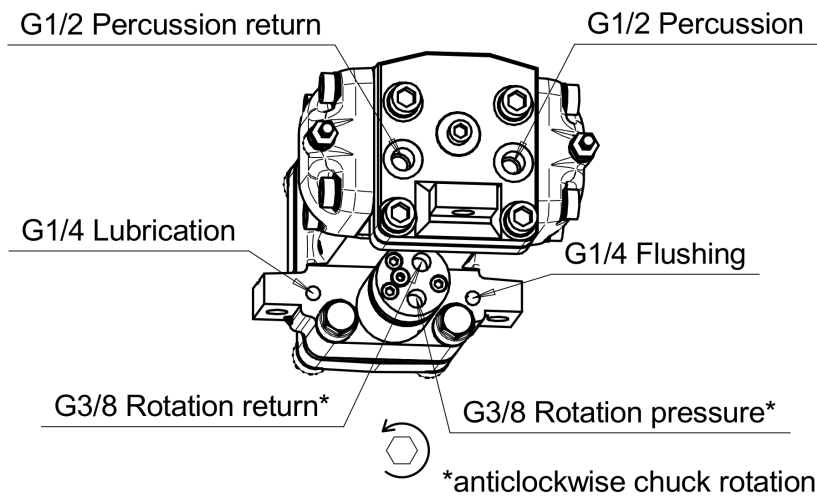
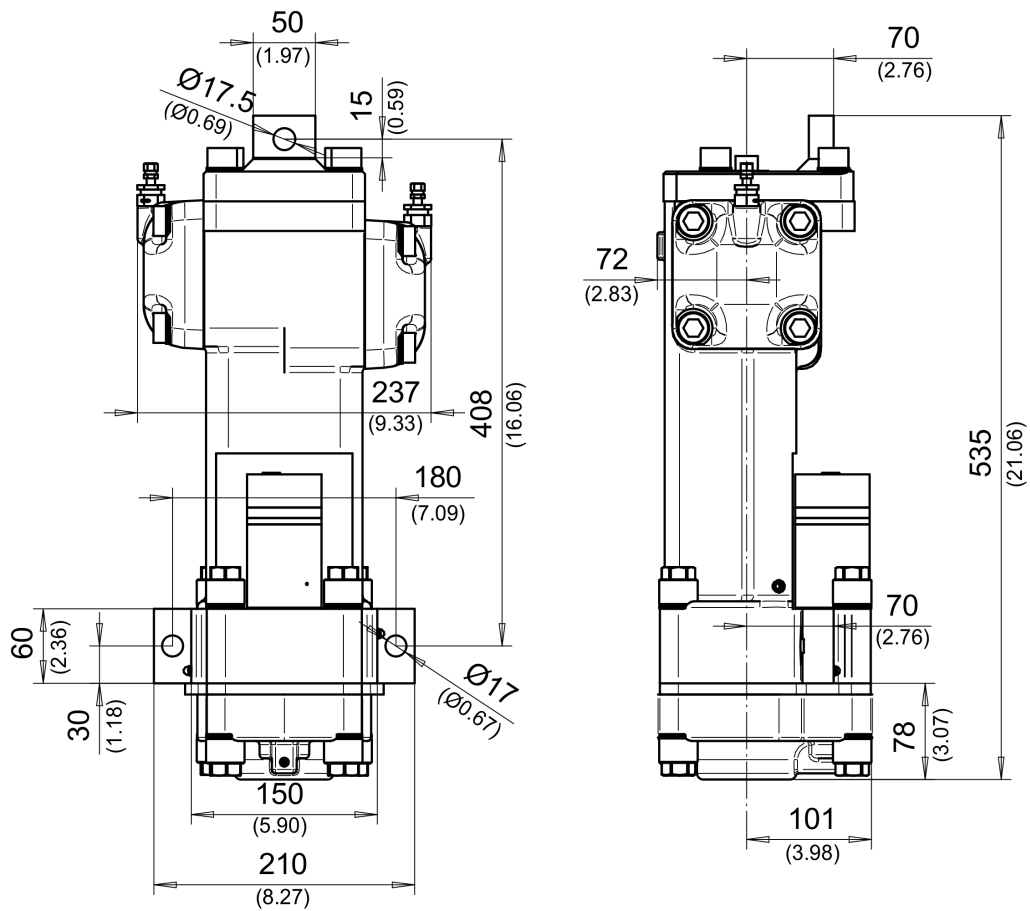
DOOFOR DF500X DRIFTER

NOMINAL POWER CLASS		10 kW	13.4 hp
OPTIMAL MAXIMUM HOLE SIZE		45 mm	1 3/4"
PERCUSSION FLOW		55–80 l/min	14.5–21.1 gpm
PERCUSSION PRESSURE		100–130 bar	1450–1885 psi
ROTATION MOTOR MAXIMUM FLOW ¹⁾	8cc	20 l/min	5.4 gpm
	12.5cc	25 l/min	6.6 gpm
	20cc	25 l/min	6.6 gpm
	32cc	25 l/min	6.6 gpm
	40cc	25 l/min	6.6 gpm
	50cc	25 l/min	6.6 gpm
ROTATION TORQUE ¹⁾	8cc	46 Nm	34 lb-ft
	12.5cc	70 Nm	52 lb-ft
	20cc	107 Nm	79 lb-ft
	32cc	177 Nm	131 lb-ft
	40cc	214 Nm	158 lb-ft
	50cc	269 Nm	198 lb-ft
ROTATION PRESSURE MAXIMUM		140 bar	2031 psi
ROTATION SPEED MAXIMUM ²⁾	8cc	300 rpm	
	12.5cc	300 rpm	
	20cc	300 rpm	
	32cc	200 rpm	
	40cc	163 rpm	
	50cc	130 rpm	
LUBRICATION	Air-oil mist	125–200 g/h	4.9–7.8 fl oz/h (1.4–2.3 dl/h)
LUBRICATION PRESSURE		4–7 bar	58–101 psi
LUBRICATION AIR FLOW		200–300 l/min	53–79 gpm
FLUSHING AIR PRESSURE ³⁾		5–7 bar	73–102 psi
FLUSHING AIR FLOW ³⁾		700–1200 l/min	185–317 gpm
RECOMMENDED MAXIMUM FEED FORCE		6 kN	1348 lbf
WEIGHT		55 kg	121 lb
SHANK SIZE		108mm [4 1/4"] * 22mm [7/8"] or 25mm[1"]	

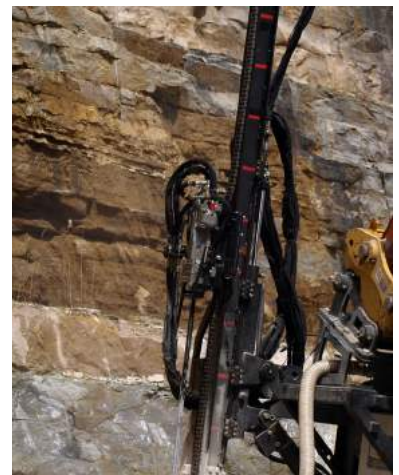
1) Intermittent value.

2) Continuous value. Maximum recommended speed 300 rpm.

3) Actual values vary according to drilling conditions and equipment.



Alternative model Doofor DF500S with male shank adapters and water flushing capability is also available.

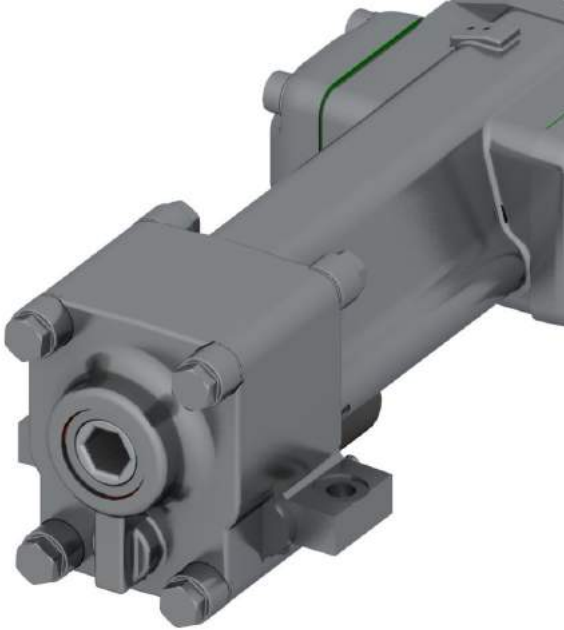


DF530X HIGH-PERFORMANCE HYDRAULIC ROCK DRILL

Doofer DF530X is a new generation high-power, high-frequency rock drill used for general excavations and quarrying. This rock drill is equipped with a hexagonal female chuck. Flushing media can be air or water.

DF530X uses a high-energy piston shape for high-penetration speed in hard rock drilling operations and is efficient in preserving good drill tool life.

This model can be used with a Doofer original drill feed system component kit.



TECHNICAL SPECIFICATIONS

DOOFOR DF530X DRIFTER

NOMINAL POWER CLASS		10 kW	13.4 hp
OPTIMAL MAXIMUM HOLE SIZE		45 mm	1 3/4"
PERCUSSION FLOW		45–55 l/min	11.9–14.5 gpm
PERCUSSION PRESSURE		100–130 bar	1450–1885 psi
ROTATION MOTOR MAXIMUM FLOW ¹⁾	8cc	20 l/min	5.4 gpm
	12.5cc	25 l/min	6.6 gpm
	20cc	25 l/min	6.6 gpm
	32cc	25 l/min	6.6 gpm
	40cc	25 l/min	6.6 gpm
	50cc	25 l/min	6.6 gpm
ROTATION TORQUE ¹⁾	8cc	46 Nm	34 lb-ft
	12.5cc	70 Nm	52 lb-ft
	20cc	107 Nm	79 lb-ft
	32cc	177 Nm	131 lb-ft
	40cc	214 Nm	158 lb-ft
	50cc	269 Nm	198 lb-ft
ROTATION PRESSURE MAXIMUM		140 bar	2031 psi
ROTATION SPEED MAXIMUM ²⁾	8cc	300 rpm	
	12.5cc	300 rpm	
	20cc	300 rpm	
	32cc	200 rpm	
	40cc	163 rpm	
	50cc	130 rpm	
LUBRICATION	Air-oil mist	125–200 g/h	4.9–7.8 fl oz/h (1.4–2.3 dl/h)
LUBRICATION PRESSURE		4–7 bar	58–101 psi
LUBRICATION AIR FLOW		200–300 l/min	53–79 gpm
FLUSHING AIR PRESSURE ³⁾		5–12 bar	73–174 psi
FLUSHING AIR FLOW ³⁾		700–1200 l/min	185–317 gpm
FLUSHING WATER PRESSURE ³⁾		5–12 bar	73–174 psi
FLUSHING WATER FLOW ³⁾		25–40 l/min	6.6–10.6 gpm
RECOMMENDED MAXIMUM FEED FORCE		6 kN	1348 lbf
WEIGHT		55 kg	121 lb

SHANK SIZE

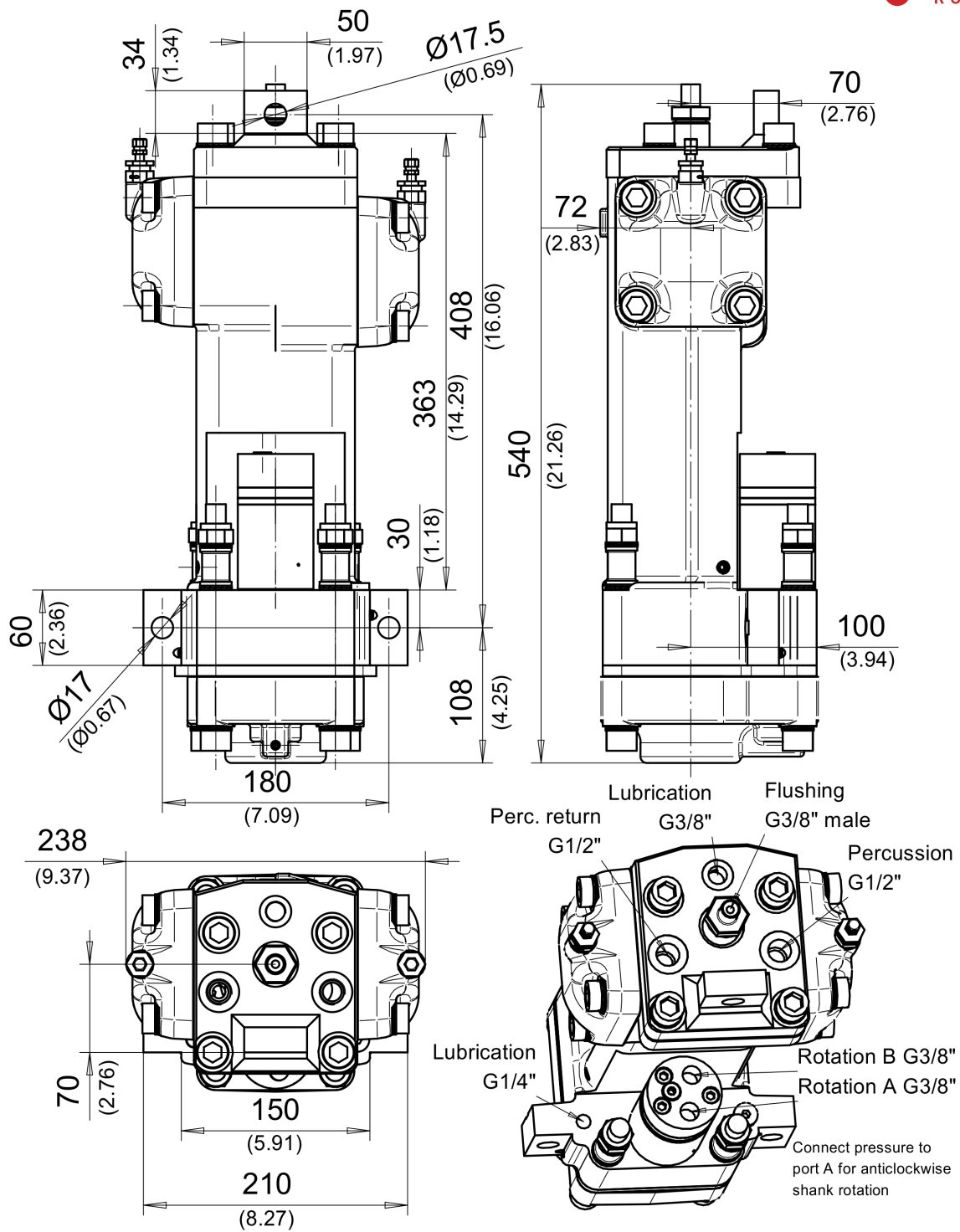
¹⁾ Intermittent value.

²⁾ Continuous value. Maximum recommended speed 300 rpm.

³⁾ Actual values vary according to drilling conditions and equipment.

108mm [4 1/4"] * 22mm [7/8"] or 25mm[1"]

DIMENSIONS



Alternative models for Doofor DF530X include Doofor DF530S with male shank adapter, Doofor DF530F with female shank adapter and Doofor DF530L with two side rotation motors for extra torque. New model DF530XS combines male or female shank adapters with short overall length.



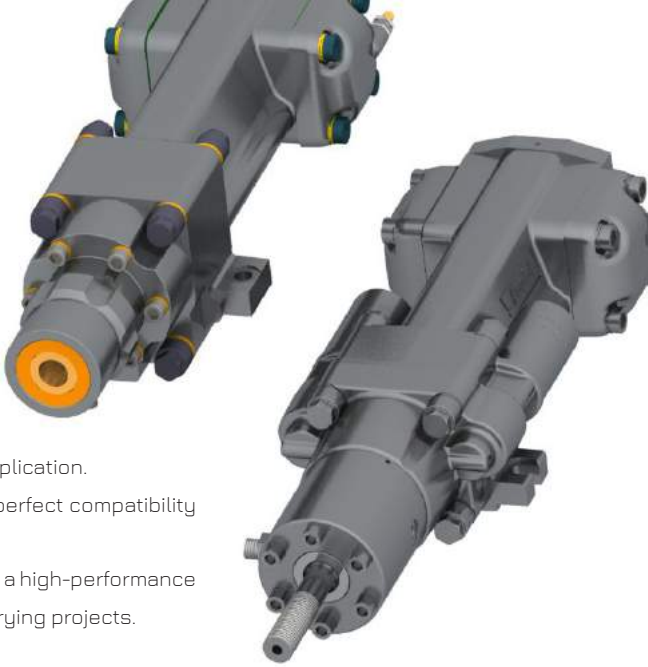
DF530F AND DF530L HIGH-PERFORMANCE HYDRAULIC ROCK DRILLS

The DF530F and DF530L rock drills share very similar characteristics but differ in their application.

DF530F combines sealed air or water flushing with female shank adapters, resulting in perfect compatibility for bolting and other underground reinforcement and surface drilling projects.

DF530L provides extra torque with two rotation motors and male shank adapters. DF530L is a high-performance rock drill offering high rotation speed capacity for general excavations, mining, and quarrying projects.

Both models can be used with a Doofer original drill feed system component kit.



TECHNICAL SPECIFICATIONS

DOOFOR DF530F AND DF530L DRIFTERS

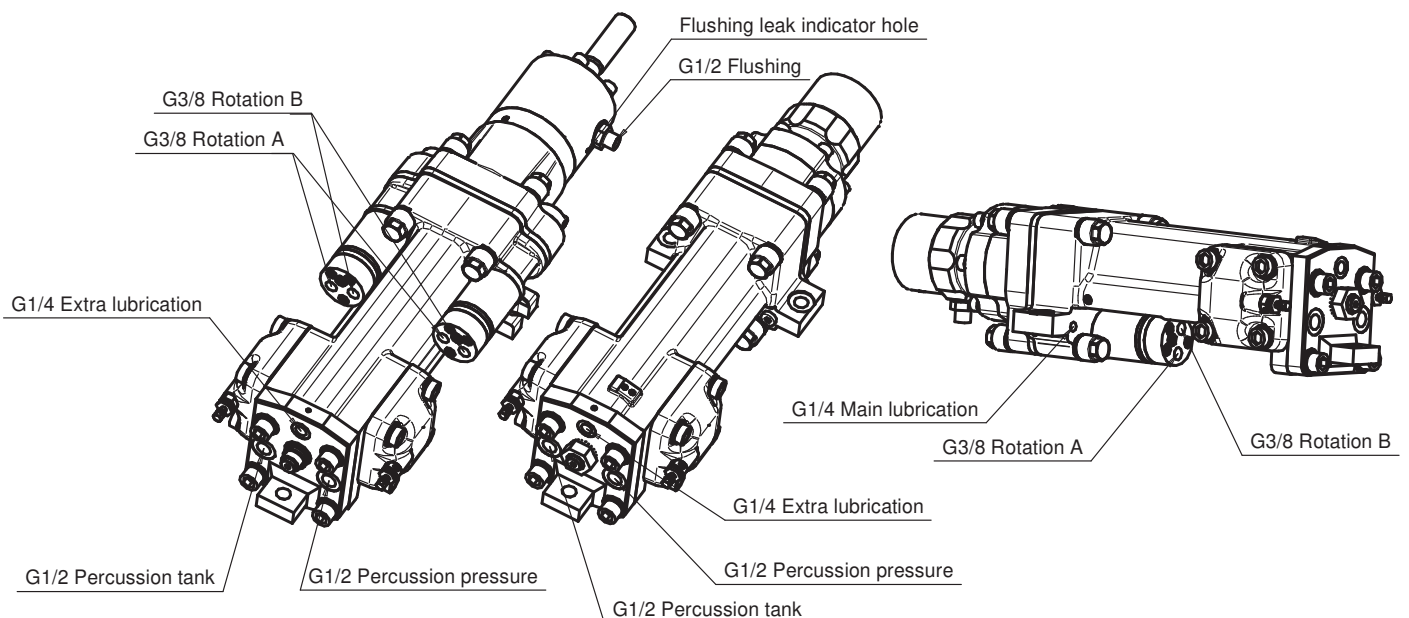
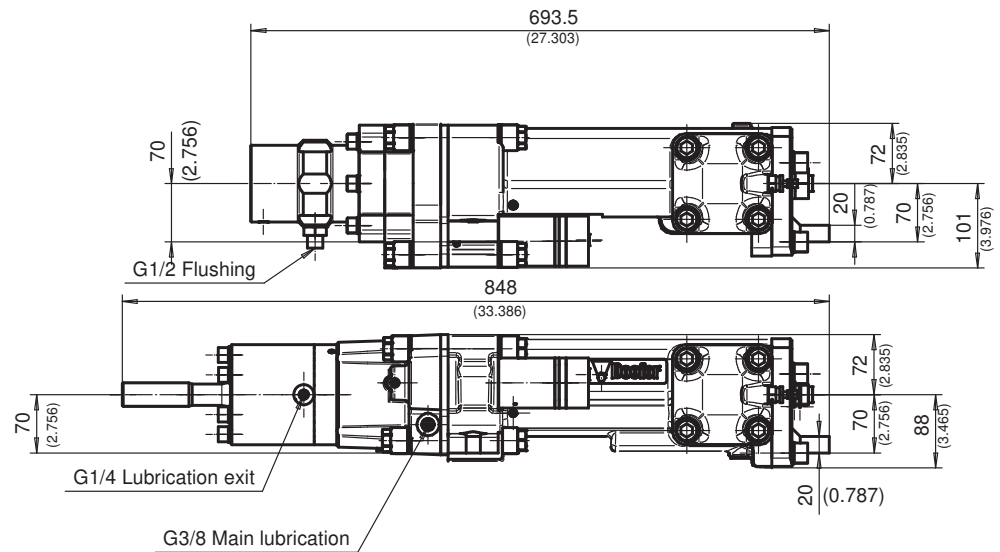
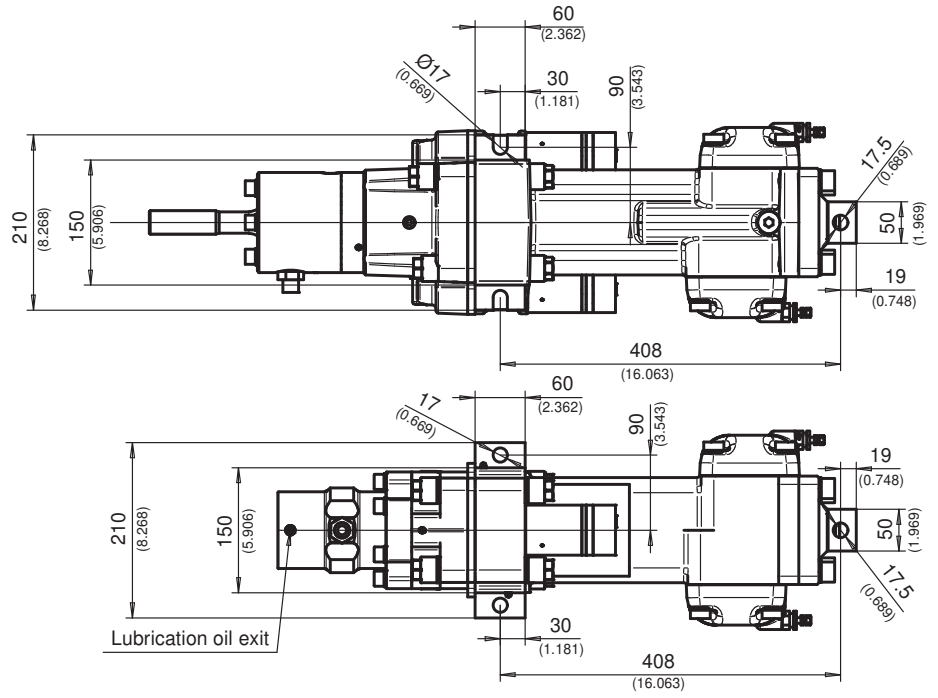
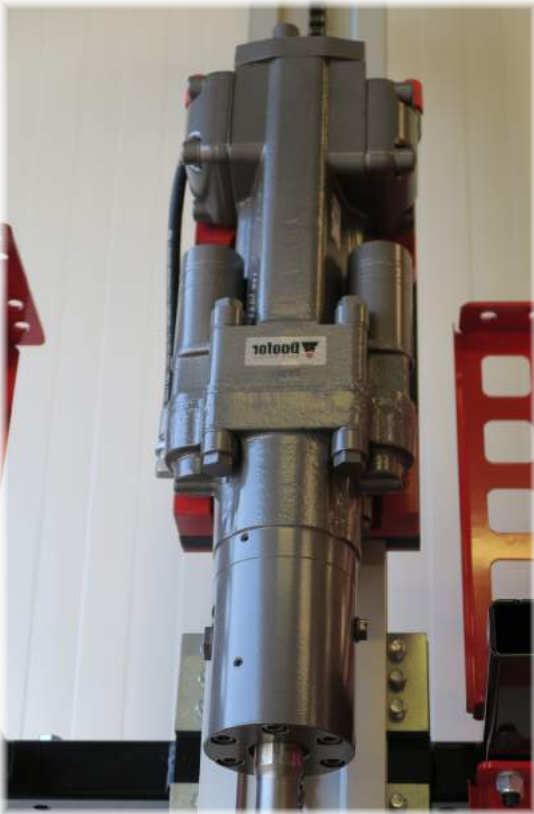
NOMINAL POWER CLASS		10 kW	13.4 hp		
OPTIMAL MAXIMUM HOLE SIZE		45 mm	1 3/4"		
PERCUSSION FLOW		45–55 l/min	11.9–14.5 gpm		
PERCUSSION PRESSURE		100–130 bar	1450–1885 psi		
LUBRICATION	Air-oil mist	125–200 g/h	4.9–7.8 fl oz/h (1.4–2.3 dl/h)		
LUBRICATION PRESSURE		4–7 bar	58–101 psi		
LUBRICATION AIR FLOW		200–300 l/min	53–79 gpm		
FLUSHING AIR PRESSURE ³⁾		5–12 bar	73–174 psi		
FLUSHING AIR FLOW ³⁾		700–1200 l/min	185–317 gpm		
FLUSHING WATER PRESSURE ³⁾		5–12 bar	73–174 psi		
FLUSHING WATER FLOW ³⁾		25–40 l/min	6.6–10.6 gpm		
RECOMMENDED MAXIMUM FEED FORCE		6 kN	1348 lbf		
SHANK SIZE	DF530F DF530L	Female 108mm [4 1/4"] * 22mm [7/8"], R23, R25, R28 and R32 Male R28, R32 (R38, T38 in HD model)			
		DF530F	DF530L		
WEIGHT		65 kg	[145 lb]	83 kg	[183 lb]
ROTATION MOTOR MAXIMUM FLOW ¹⁾	12.5cc	25 l/min	[6.6 gpm]		
	20cc	25 l/min	[6.6 gpm]	2x 20cc	50 l/min [13.2 gpm]
	32cc	25 l/min	[6.6 gpm]	2x 32cc	50 l/min [13.2 gpm]
	40cc	25 l/min	[6.6 gpm]	2x 40cc	50 l/min [13.2 gpm]
	50cc	25 l/min	[6.6 gpm]	2x 50cc	50 l/min [13.2 gpm]
ROTATION TORQUE ¹⁾	12.5cc	70 Nm	[52 lb-ft]		
	20cc	107 Nm	[79 lb-ft]	2x 20cc	181 Nm [131 lb-ft]
	32cc	177 Nm	[131 lb-ft]	2x 32cc	295 Nm [218 lb-ft]
	40cc	214 Nm	[158 lb-ft]	2x 40cc	363 Nm [268 lb-ft]
	50cc	269 Nm	[198 lb-ft]	2x 50cc	456 Nm [336 lb-ft]
ROTATION SPEED MAXIMUM ²⁾	12.5cc	300 rpm			
	20cc	300 rpm		2x 20cc	300 rpm
	32cc	200 rpm		2x 32cc	240 rpm
	40cc	163 rpm		2x 40cc	190 rpm
	50cc	130 rpm		2x 50cc	154 rpm
ROTATION PRESSURE MAXIMUM		140 bar	2031 psi		

1) Intermittent value.

2) Continuous value. Maximum recommended speed 300 rpm.

3) Actual values vary according to drilling conditions and equipment.

DIMENSIONS

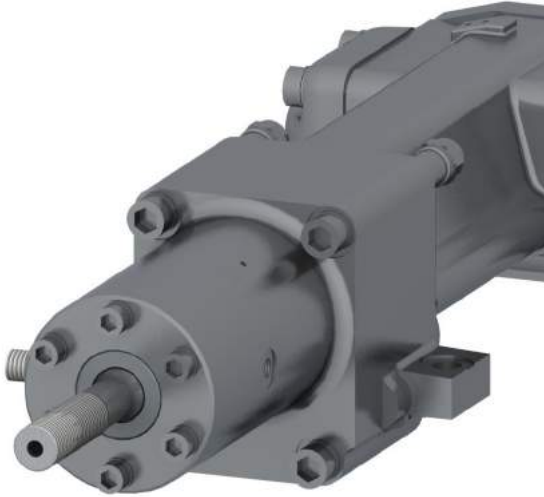


DF530S HIGH-PERFORMANCE HYDRAULIC ROCK DRILL

Doofer DF530S is a new generation, high-power, high-frequency rock drill used for general excavations, mining, and quarrying. This rock drill is equipped with a separated flushing box with side connection. Flushing is possible with water or air.

DF530S offers a long service life due to its simple, modular construction which makes maintenance easy and affordable.

This model can be used with a Doofer original drill feed system component kit.



TECHNICAL

SPECIFICATIONS

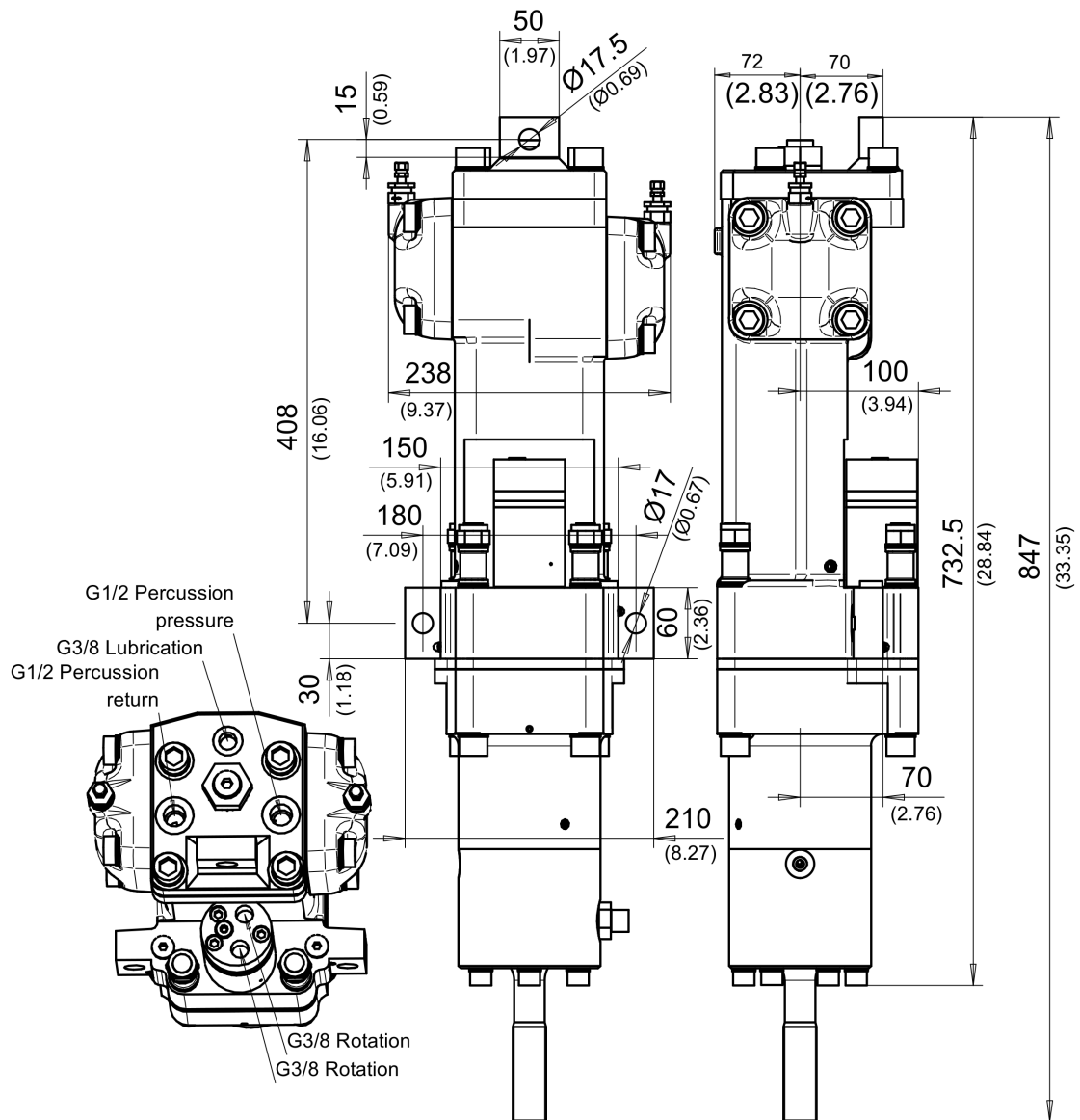
DOOFOR DF530S DRIFTER

NOMINAL POWER CLASS		10 kW	13.4 hp
OPTIMAL MAXIMUM HOLE SIZE		45 mm	1 3/4"
PERCUSSION FLOW		45–55 l/min	11.9–14.5 gpm
PERCUSSION PRESSURE		100–130 bar	1450–1885 psi
ROTATION MOTOR MAXIMUM FLOW ¹⁾	8cc	20 l/min	5.4 gpm
	12.5cc	25 l/min	6.6 gpm
	20cc	25 l/min	6.6 gpm
	32cc	25 l/min	6.6 gpm
	40cc	25 l/min	6.6 gpm
	50cc	25 l/min	6.6 gpm
ROTATION TORQUE ¹⁾	8cc	46 Nm	34 lb-ft
	12.5cc	70 Nm	52 lb-ft
	20cc	107 Nm	79 lb-ft
	32cc	177 Nm	131 lb-ft
	40cc	214 Nm	158 lb-ft
	50cc	269 Nm	198 lb-ft
ROTATION PRESSURE MAXIMUM		140 bar	2031 psi
ROTATION SPEED MAXIMUM ²⁾	8cc	300 rpm	
	12.5cc	300 rpm	
	20cc	300 rpm	
	32cc	200 rpm	
	40cc	163 rpm	
	50cc	130 rpm	
LUBRICATION	Air-oil mist	125–200 g/h	4.9–7.8 fl oz/h (1.4–2.3 dl/h)
LUBRICATION PRESSURE		4–7 bar	58–101 psi
LUBRICATION AIR FLOW		200–300 l/min	53–79 gpm
FLUSHING AIR PRESSURE ³⁾		5–12 bar	73–174 psi
FLUSHING AIR FLOW ³⁾		700–1200 l/min	185–317 gpm
FLUSHING WATER PRESSURE ³⁾		5–12 bar	73–174 psi
FLUSHING WATER FLOW ³⁾		25–40 l/min	6.6–10.6 gpm
RECOMMENDED MAXIMUM FEED FORCE		6 kN	1348 lbf
WEIGHT		77 kg	170 lb
SHANK SIZE		Male R28, R32	

1) Intermittent value.

2) Continuous value. Maximum recommended speed 300 rpm.

3) Actual values vary according to drilling conditions and equipment.

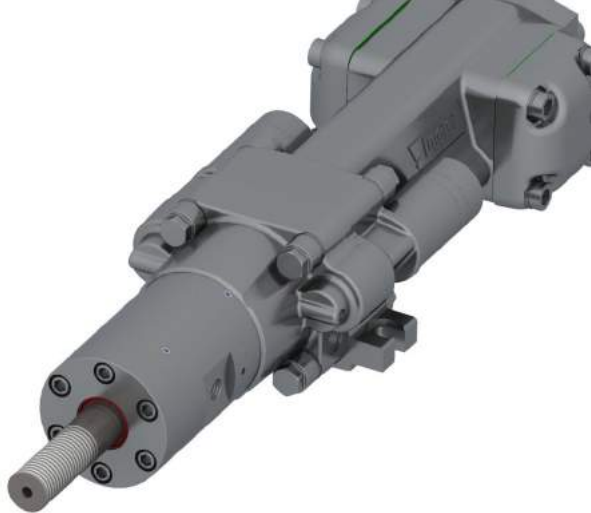


Alternative models for Doofor DF530S include Doofor DF530F with female shank adapter, Doofor DF530X with hexagonal chuck and Doofor DF530L with two side rotation motors for extra torque.



DF538L HIGH-PERFORMANCE HYDRAULIC ROCK DRILL

Doofer DF538L is a highly efficient hydraulic rock drill equipped with two rotation motors capable of generating high levels of torque. This rock drill features a robust gearbox which maximizes durability for surface and underground use. DF538L application varies from general excavations, tunneling or mining. This model can be used with a Doofer original drill feed system component kit.



TECHNICAL

SPECIFICATIONS

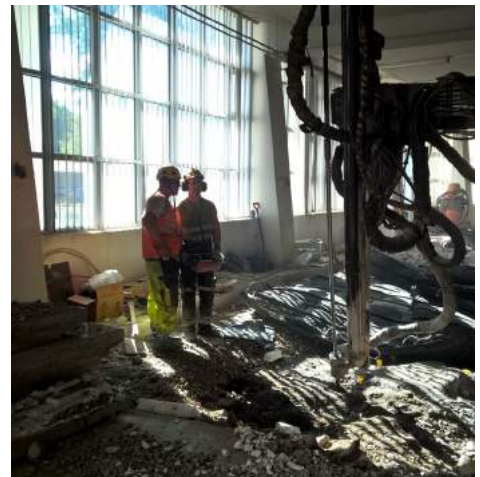
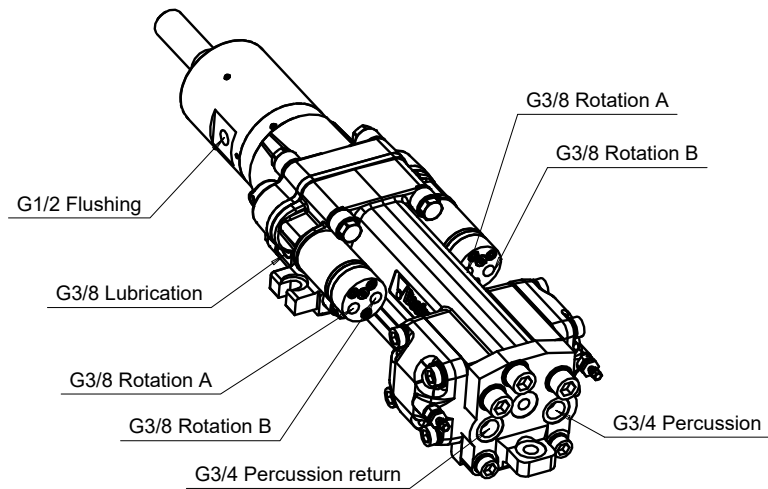
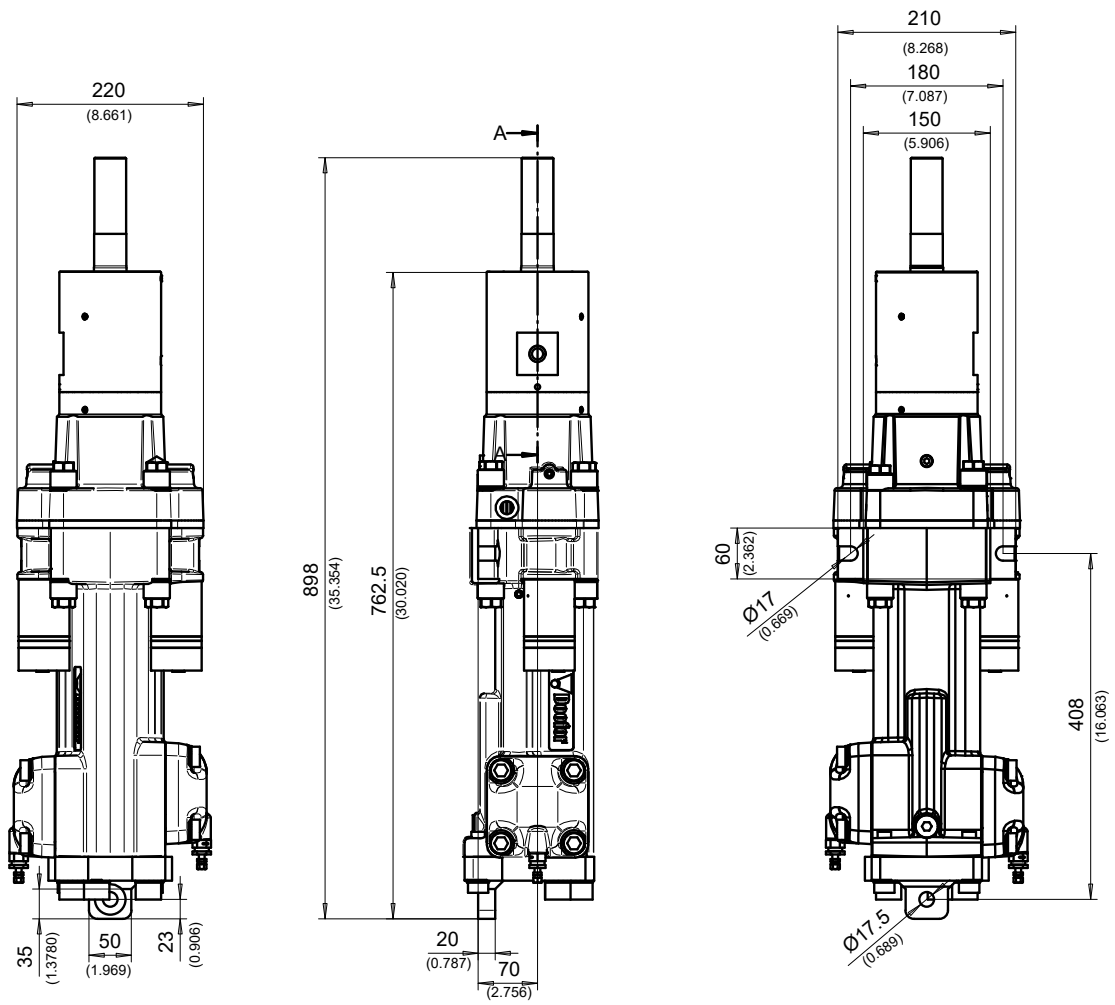
DOOFOR DF538L DRIFTER

NOMINAL POWER CLASS		13 kW	17.4 hp
OPTIMAL MAXIMUM HOLE SIZE		57 mm	2 1/4"
PERCUSSION FLOW		65–85 l/min	17–23 gpm
PERCUSSION PRESSURE		110–140 bar	1600–2050 psi
ROTATION MOTOR MAXIMUM FLOW ¹⁾	2x 20cc	50 l/min	13.2 gpm
	2x 32cc	50 l/min	13.2 gpm
	2x 40cc	50 l/min	13.2 gpm
	2x 50cc	50 l/min	13.2 gpm
ROTATION TORQUE ¹⁾	2x 20cc	181 Nm	131 lb-ft
	2x 30cc	295 Nm	218 lb-ft
	2x 40cc	363 Nm	268 lb-ft
	2x 50cc	456 Nm	336 lb-ft
ROTATION PRESSURE MAXIMUM		140 bar	2031 psi
ROTATION SPEED MAXIMUM ²⁾	2x 20cc	300 rpm	
	2x 32cc	240 rpm	
	2x 40cc	190 rpm	
	2x 50cc	154 rpm	
LUBRICATION	Air-oil mist	150–250 g/h	5.9–9.8 fl oz/h (1.7–2.9 dl/h)
LUBRICATION PRESSURE		4–7 bar	58–101 psi
LUBRICATION AIR FLOW		200–300 l/min	53–79 gpm
FLUSHING AIR PRESSURE ³⁾		5–10 bar	73–145 psi
FLUSHING AIR FLOW ³⁾		1500–2500 l/min	396–660 gpm
FLUSHING WATER PRESSURE ³⁾		4–12 bar	58–174 psi
FLUSHING WATER FLOW ³⁾		30–40 l/min	8–11 gpm
RECOMMENDED MAXIMUM FEED FORCE		10 kN	2250 lbf
WEIGHT		83 kg	183 lb
SHANK SIZE		R32, R38, T38	

1) Intermittent value.

2) Continuous value. Maximum recommended speed 300 rpm.

3) Actual values vary according to drilling conditions and equipment.



DF540L HIGH-PERFORMANCE HYDRAULIC ROCK DRILL

DF540L is a powerful member of the Doofer rock drill family with a patented percussion system capable of maintaining a high operational percussion rate. The DF540L model is highly flexible and can be installed in a variety of positions. The motor can also be installed on the right or left-hand side. In addition, this rock drill has a very low profile, only 82.5mm from the drill center line.

The DF540L rock drill is typically used in bolting, general excavations, and underground mining operations. Flushing media can be water or air. The rock drill has separated flushing box.

Optimized internal oil flow construction effectively preserves hydraulic power, resulting in a better oil flow efficiency and low operating cost.



TECHNICAL

SPECIFICATIONS

DOOFOR DF540L DRIFTER

NOMINAL POWER CLASS		14 kW	18.8 hp
OPTIMAL MAXIMUM HOLE SIZE		64 mm	2 1/2"
PERCUSSION FLOW		90 l/min	23.8 gpm
PERCUSSION PRESSURE		140 bar	2030 psi
ROTATION MOTOR MAXIMUM FLOW ^{1) 4)}	80cc	80 l/min	21.1 gpm
	125cc	90 l/min	23.8 gpm
	160cc	90 l/min	23.8 gpm
ROTATION TORQUE ¹⁾	80cc	504 Nm	372 lb-ft
	125cc	796 Nm	587 lb-ft
	160cc	975 Nm	719 lb-ft
ROTATION PRESSURE MAXIMUM		175 bar	2540 psi
ROTATION SPEED MAXIMUM ²⁾	80cc	250 rpm	
	125cc	250 rpm	
	160cc	250 rpm	
LUBRICATION	Air-oil mist	200-300 g/h	7.8-11.7 fl oz/h (2.3-3.5 dl/h)
LUBRICATION PRESSURE		4-7 bar	58-101 psi
LUBRICATION AIR FLOW		200-300 l/min	53-79 gpm
FLUSHING AIR PRESSURE ³⁾		5-7 bar	73-101 psi
FLUSHING AIR FLOW ³⁾		4000 l/min	1057 gpm
FLUSHING WATER FLOW ³⁾		150 l/min	39.6 gpm
RECOMMENDED MAXIMUM FEED FORCE		15 kN	3372 lbf
WEIGHT		131 kg	289 lb
SHANK SIZE		R32, R38, T38	

1) Intermittent value.

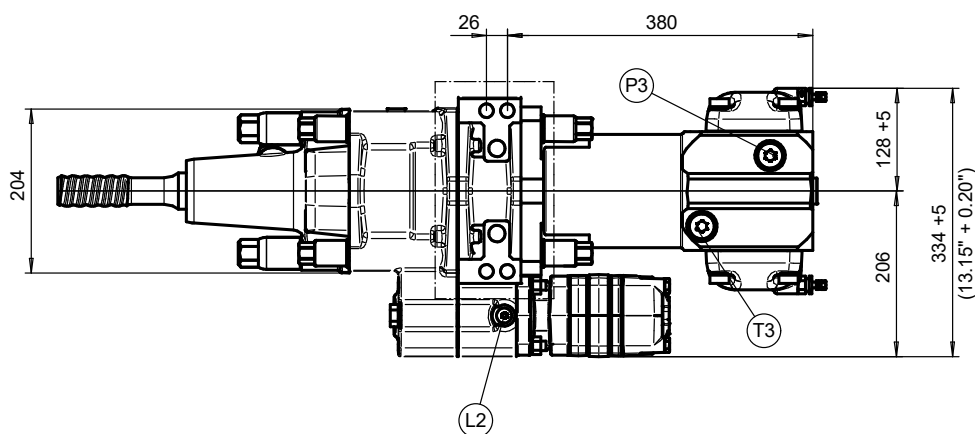
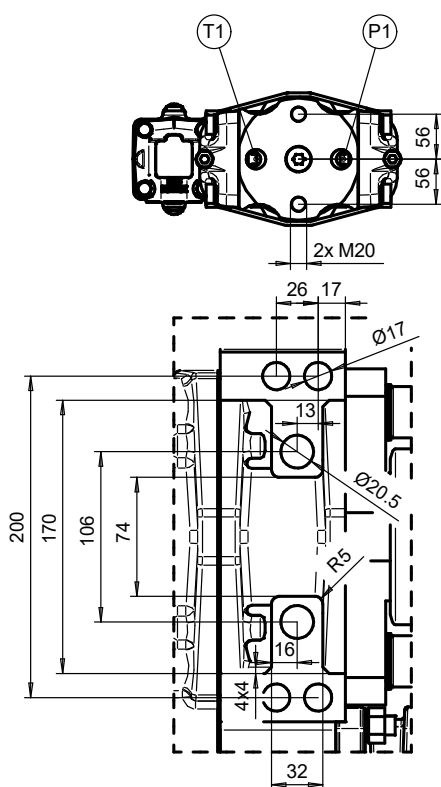
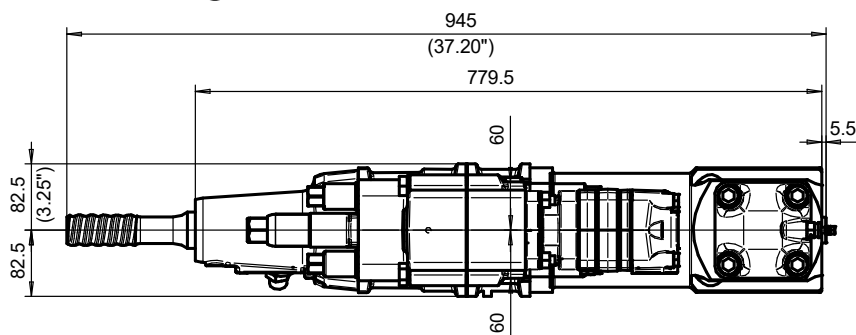
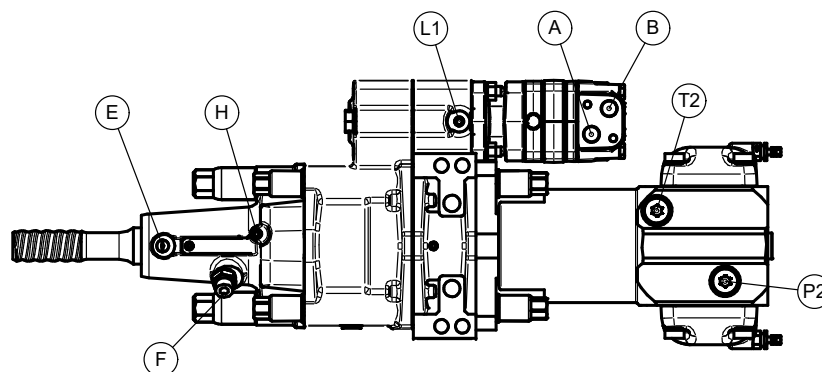
2) Continuous value. Maximum recommended speed 250 rpm.

3) Actual values vary according to drilling conditions and equipment.

4) Value for default DMS motors only.

DIMENSIONS

- A) G1/2 Rotation A
- B) G1/2 Rotation B
- E) G3/8 Lubrication exit
- F) G1/2 Flushing (Optional: G3/4, JIC7/8, JIC 1 1/16)
- H) Flushing seal leak indicator hole
- L1) G1/4 Pressurised air-oil mist lubrication
- L2) G1/4 Plug, alternative to L1
- P1) G3/4 Percussion pressure
- P2 & P3) G3/4 Plug, alternative to P1
- T1) G3/4 percussion return to tank
- T2 & T3) G3/4 Plug, alternative to L1



Motor can be on the left or on the right side. Motor ports can be turned. Back port versions of motor are available.

Flushing head can be turned 180 degrees. Accumulators can be turned to any of the four positions (depending on motor.)

Doofor DF540L can be equipped with BLT-, BLTF-, EXT- and 2M options.



DF550L HIGH-PERFORMANCE HYDRAULIC ROCK DRILL

Doofer DF550L maintains its durable, universal structure similar to its predecessors. This rock drill was designed with power and multipurpose in mind. The rotation motor can be installed on the right or left-hand side and further customization is possible with BLT attachment option for bolting application.

The DF550L has a separated flushing box and flushing media can be water or air. The standard DF550L model can be used to enhance your drilling operations in projects including underground production drilling, tunnelling, and bolting. This rock drill has a very low profile, only 84mm from the drill center line.



TECHNICAL

SPECIFICATIONS

DOOFOR DF550L DRIFTER

NOMINAL PERCUSSION POWER		17 kW	22.8 hp
OPTIMAL MAXIMUM HOLE SIZE		76 mm	3"
PERCUSSION FLOW		90–120 l/min	23.8–31.7 gpm
PERCUSSION PRESSURE		80–160 bar	1160–2321 psi
ROTATION MOTOR MAXIMUM FLOW ^{1) 4)}	80cc	80 l/min	21.1 gpm
	100cc	90 l/min	23.8 gpm
	125cc	90 l/min	23.8 gpm
	160cc	90 l/min	23.8 gpm
	200cc	90 l/min	23.8 gpm
ROTATION TORQUE ¹⁾	80cc	504 Nm	372 lb-ft
	100cc	634 Nm	468 lb-ft
	125cc	796 Nm	587 lb-ft
	160cc	975 Nm	719 lb-ft
	200cc	1170 Nm	863 lb-ft
ROTATION PRESSURE MAXIMUM		175 bar	2540 psi
ROTATION SPEED MAXIMUM ²⁾	80cc	250 rpm	
	100cc	250 rpm	
	125cc	250 rpm	
	160cc	250 rpm	
	200cc	225 rpm	
LUBRICATION	Air-oil mist	200–300 g/h	7.8–11.7 fl oz/h (2.3–3.5 dl/h)
LUBRICATION PRESSURE		6–7 bar	87–101 psi
LUBRICATION AIR FLOW		200–300 l/min	53–79 gpm
FLUSHING AIR PRESSURE ³⁾		5–7 bar	73–101 psi
FLUSHING AIR FLOW ³⁾		4000 l/min	1057 gpm
FLUSHING WATER FLOW ³⁾		50–150 l/min	13–40 gpm
RECOMMENDED MAXIMUM FEED FORCE		15 kN	3372 lbf
WEIGHT		151 kg	333 lb
SHANK SIZE		R32, R38, T38 (T45 with special options)	

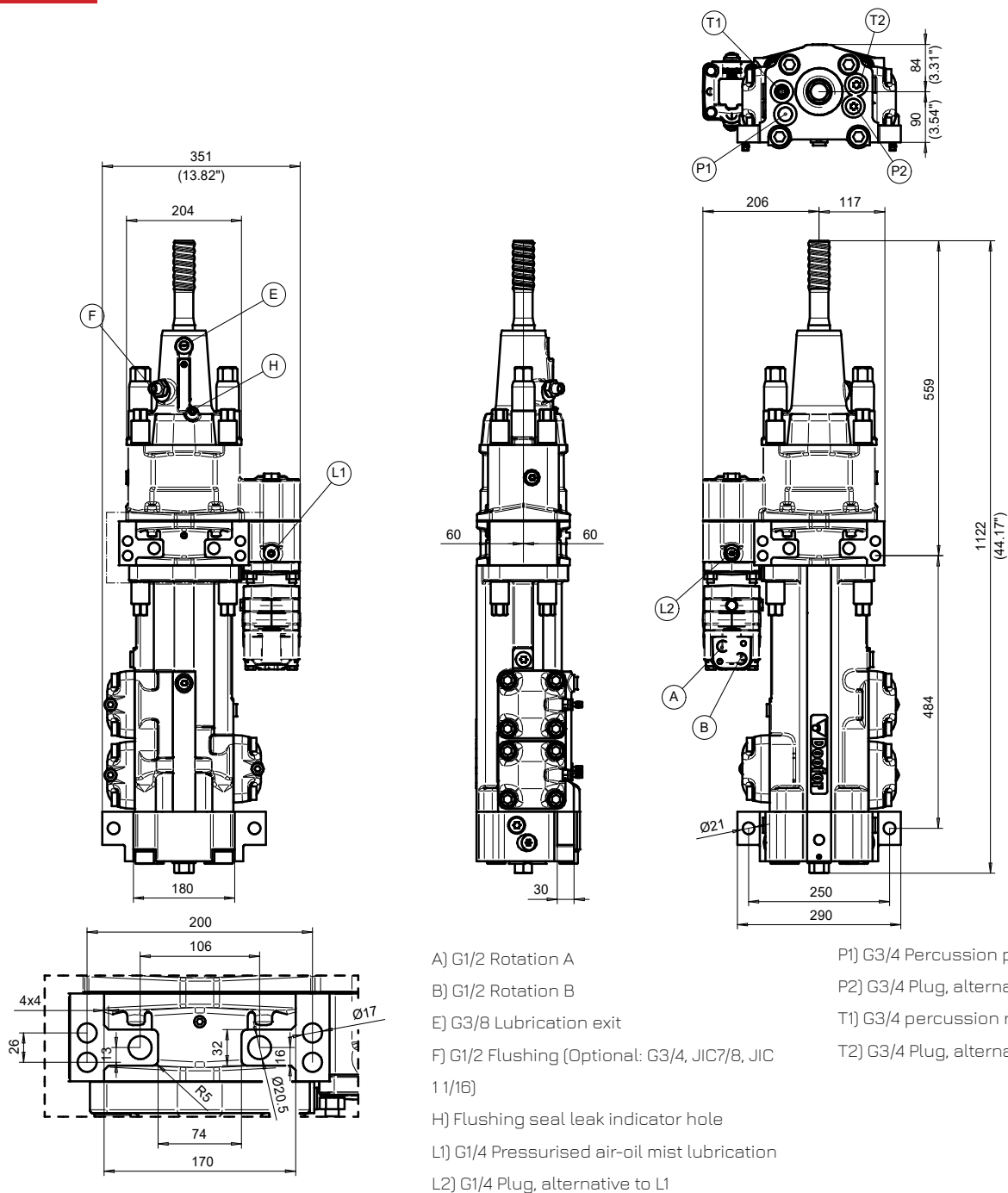
1) Intermittent value.

2) Continuous value. Maximum recommended speed 250 rpm.

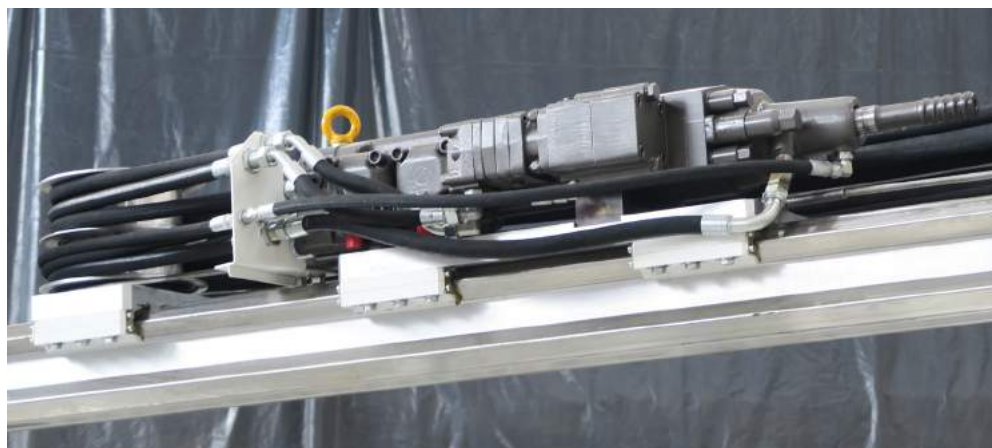
3) Actual values vary according to drilling conditions and equipment.

4) Value for default OMS motors only.

DIMENSIONS



Motor can be on the left or on the right side. Motor ports can be turned. Back port versions of motor are available.
 Flushing head can be turned 180 degrees. Accumulators can be turned to any of the four positions (depending on motor.)
 Doofor DF550L can be equipped with BLT-, BLTF-, EXT- and 2M options.



DF560L HIGH-PERFORMANCE HYDRAULIC ROCK DRILL



Doofor DF560L is a next generation hydraulic rock drill designed to ensure high-drilling capacity and optimal drill steel lifetime. Patented percussion channeling minimizes the number of parts requiring maintenance, making this rock drill one of the best on the market in terms of power to weight ratio. Original modular design makes this rock drill also one of the easiest to service. The rotation motor can be installed on the right or left-hand side. Flushing media can be air or water. Customization options include BLT and BLTF variants for bolting and grouting.

DF560L can be used in underground production drilling and tunnelling applications.

This rock drill has a very low profile, only 84mm from the drill center line.

TECHNICAL

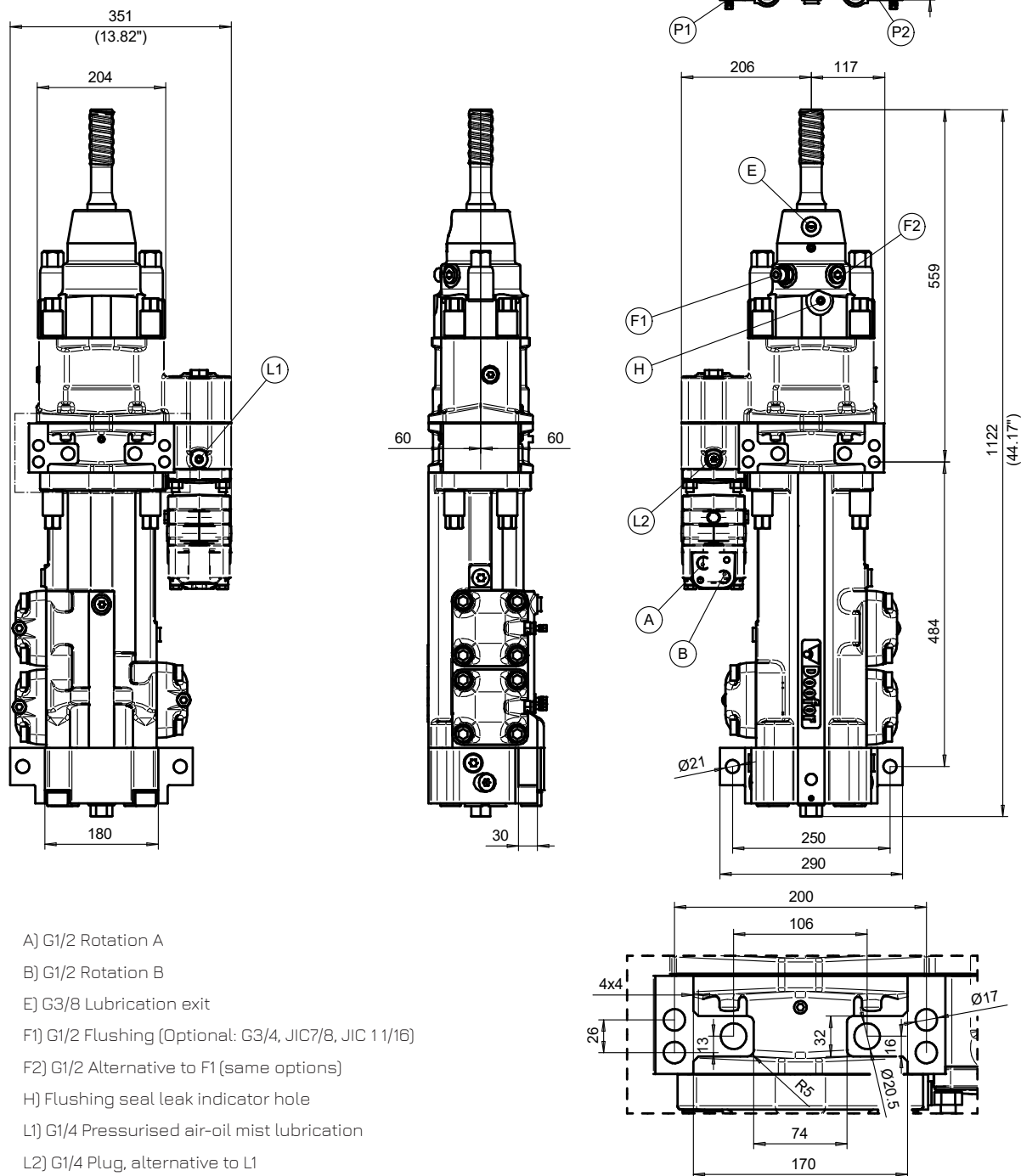
SPECIFICATIONS

DOOFOR DF560L DRIFTER

NOMINAL PERCUSSION POWER		20 kW	26.8 hp
OPTIMAL MAXIMUM HOLE SIZE		89 mm	3 1/2"
PERCUSSION FLOW		110–130 l/min	29.1–34.3 gpm
PERCUSSION PRESSURE		80–150 bar	1160–2176 psi
ROTATION MOTOR MAXIMUM FLOW ^{1) 4)}	80cc	80 l/min	21.1 gpm
	100cc	90 l/min	23.8 gpm
	125cc	90 l/min	23.8 gpm
	160cc	90 l/min	23.8 gpm
	200cc	90 l/min	23.8 gpm
ROTATION TORQUE ¹⁾	80cc	504 Nm	372 lb-ft
	100cc	634 Nm	468 lb-ft
	125cc	796 Nm	587 lb-ft
	160cc	975 Nm	719 lb-ft
	200cc	1170 Nm	863 lb-ft
ROTATION PRESSURE MAXIMUM		175 bar	2540 psi
ROTATION SPEED MAXIMUM ²⁾	80cc	250 rpm	
	100cc	250 rpm	
	125cc	250 rpm	
	160cc	250 rpm	
	200cc	225 rpm	
LUBRICATION	Air-oil mist	200–300 g/h	7.8–11.7 fl oz/h (2.3–3.5 dl/h)
LUBRICATION PRESSURE		6–7 bar	87–101 psi
LUBRICATION AIR FLOW		200–300 l/min	53–79 gpm
FLUSHING AIR PRESSURE ³⁾		5–7 bar	73–101 psi
FLUSHING AIR FLOW ³⁾		4000 l/min	1057 gpm
FLUSHING WATER FLOW ³⁾		50–150 l/min	13–40 gpm
RECOMMENDED MAXIMUM FEED FORCE		15 kN	3372 lbf
WEIGHT		151 kg	333 lb
SHANK SIZE		R32, R38, T38, T45	

1) Intermittent value.
2) Continuous value. Maximum recommended speed 250 rpm.
3) Actual values vary according to drilling conditions and equipment.
4) Value for default OMS motors only.

DIMENSIONS



A) G1/2 Rotation A

B) G1/2 Rotation B

E) G3/8 Lubrication exit

F1) G1/2 Flushing (Optional: G3/4, JIC7/8, JIC 1 1/16)

F2) G1/2 Alternative to F1 (same options)

H) Flushing seal leak indicator hole

L1) G1/4 Pressurised air-oil mist lubrication

L2) G1/4 Plug, alternative to L1

P1) G3/4 Percussion pressure

P2) G3/4 Plug, alternative to P1

T1) G3/4 percussion return to tank

T2) G3/4 Plug, alternative to L1

Motor can be on the left or on the right side. Motor ports can be turned. Back port versions of motor are available.

Flushing head can be turned 180 degrees. Accumulators can be turned to any of the four positions (depending on motor.)

Doofor DF560L can be equipped with BLT-, BLTF-, EXT- and 2M options.



OPTIONS FOR DOOFOR DF560L DF550L AND DF540L HYDRAULIC ROCK DRILLS

Besides different shank adapters and rotation motor sizes, variety of options are available for Doofor DF540L, DF550L and DF560L hydraulic rock drills.

Options improve the performance and make the product more suitable for your application.

EXT option lifts the shank adapter back to the striking point, making it easy to open the drill strings.

2M option effectively doubles the torque of the rock drill.

BLT option allows the use of female shank adapters up to R32. Extra seals enhance durability.

BLTF option allows the use of female shank adapters up to T38/R38 size.

Flushing head is completely separated, making it easy to use grouting fluids.

2M OPTION FOR HIGH TORQUE WITH TWO ROTATION MOTORS

2M option replaces the gear box with two rotation motor version. It can be attached to the Doofer DF540L, DF550L and DF560L rock drills. The option improves the performance of the rock drill by increasing rotation torque.

2M-option can be combined with BLT- and EXT-options.



TECHNICAL

SPECIFICATIONS

2M OPTION FOR DOOFOR DF540L, DF550L AND DF560L

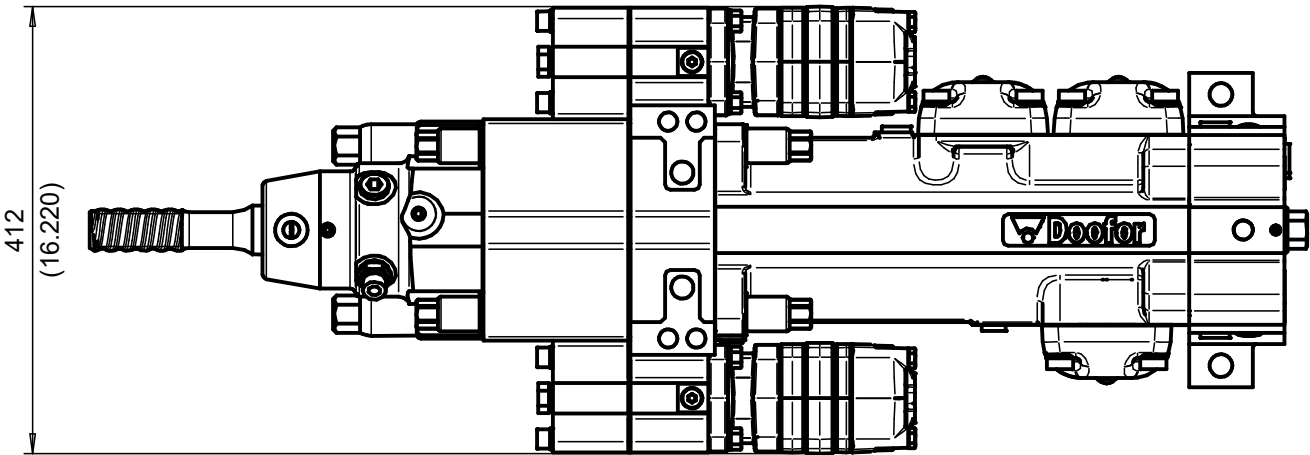
ROTATION MOTOR MAXIMUM FLOW ^{1) 4)}	2x 80cc	160 l/min	42.2 gpm
	2x 125cc	180 l/min	47.6 gpm
	2x 160cc	180 l/min	47.6 gpm
ROTATION TORQUE ¹⁾	2x 80cc	1008 Nm	744 lb-ft
	2x 125cc	1592 Nm	1174 lb-ft
	2x 160cc	1950 Nm	1438 lb-ft
ROTATION PRESSURE MAXIMUM		175 bar	2540 psi
ROTATION MOTOR MAXIMUM SPEED ²⁾	2x 80cc	250 rpm	
	2x 125cc	250 rpm	
	2x 160cc	250 rpm	

1) Intermittent value.

2) Continuous value. Maximum recommended speed 250 rpm.

3) Actual values vary according to drilling conditions and equipment.

4) Value for default DMS motors only.



BLT OPTION FOR BOLTING AND GROUTING

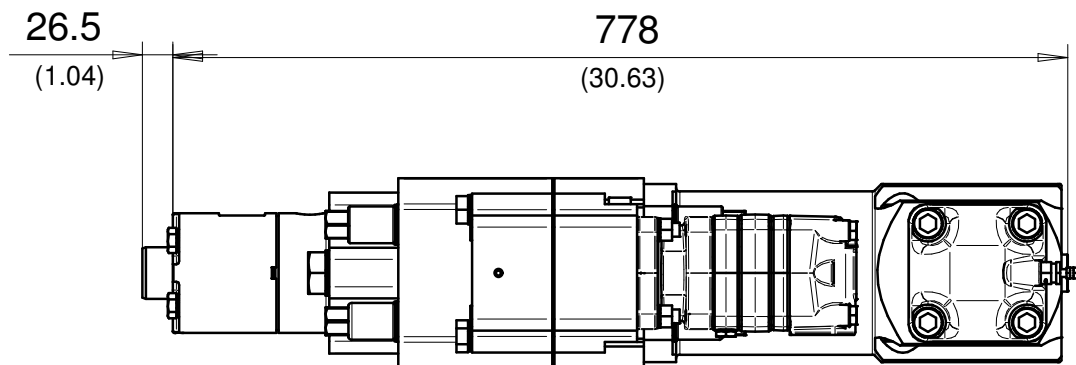


BLT-option modifies the flushing head of the rock drill. It has 3 basic variants: short flushing head for bolting, long flushing head with extra seals, and special grouting flushing head. Fourth, special variant with flushing box has extra bearing for shank adapter support. BLT flushing heads can also be used for tunnelling and general excavations.

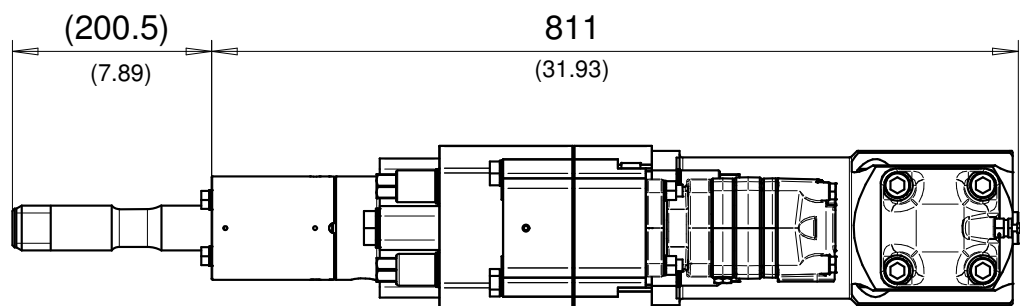
BLT-option can be used with Doofor DF540L, DF550L and DF560L rock drills. It can be used together with 2M-option.

The BLT-option requires special shank adapters. Short flushing head can use female R32 shank adapter.

BLT OPTION FOR DF540L



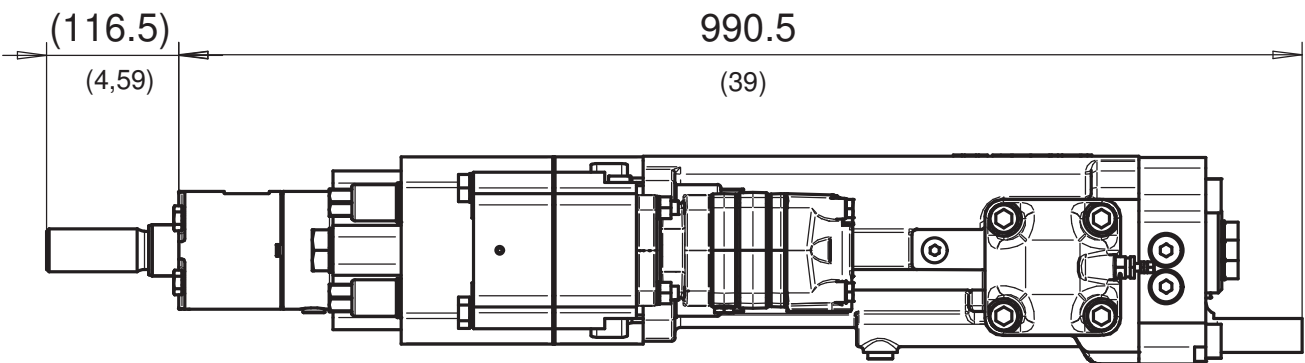
Short variant.



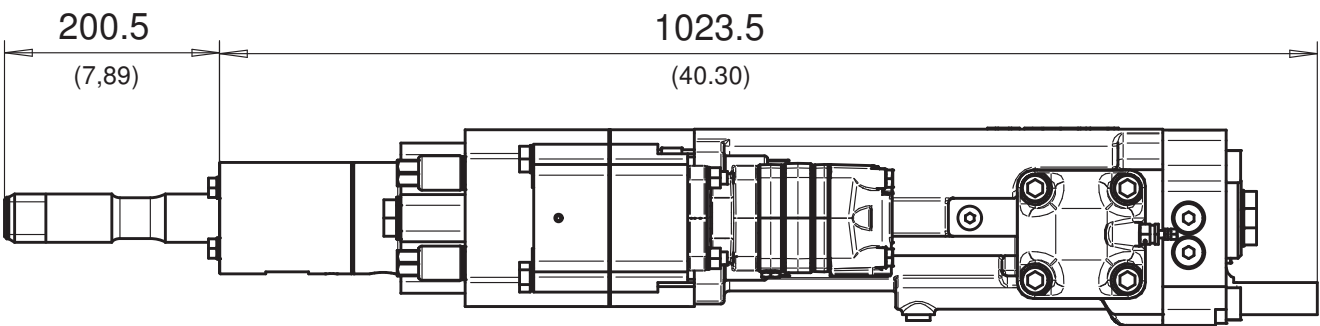
Long / grouting variant.



BLT OPTION FOR DF550L AND DF560L



Short variant.



Long / grouting variant.

TECHNICAL SPECIFICATIONS

BLT OPTION SHANK ADAPTERS

BLT (SHORT VARIANT)	Male R32, R38, T38 and female R32
BLT (LONG AND GROUTING VARIANTS)	Male R32, R38, T35, T38 and T45

FLUSHING SEALS

STANDARD	3+1
BLT (SHORT VARIANT)	3+2 or 3+1
BLT (LONG AND GROUTING VARIANTS)	4+2



BLTF OPTION FOR GROUTING

BLTF-option replaces the flushing head of the rock drill with a separate flushing box, making it possible to inject grouting material easily. It requires special female R38 shank adapters.

The BLTF-option can be used with Doofor DF540L, DF550L and DF560L rock drills. It can also be used together with 2M-option.



TECHNICAL

SPECIFICATIONS

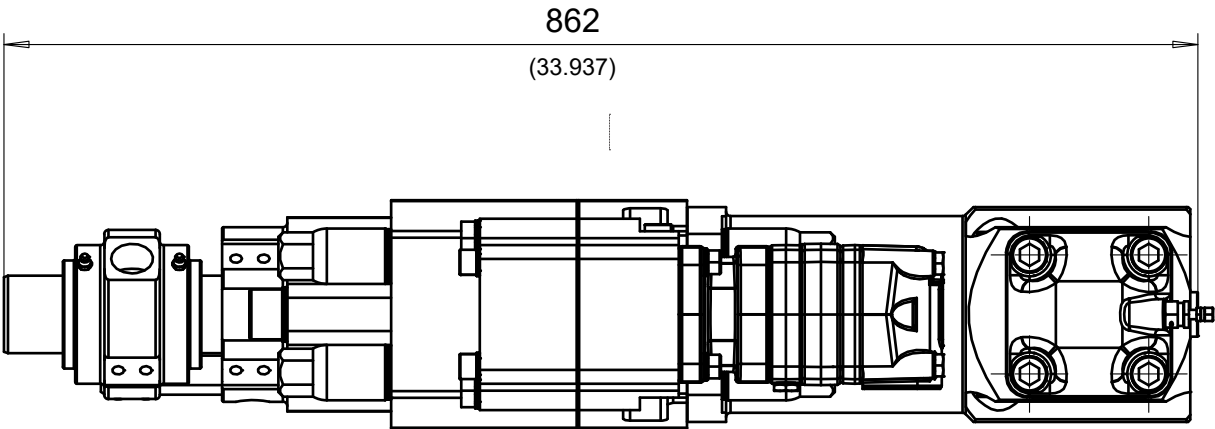
BLTF OPTION SHANK ADAPTERS

BLTF	Female T38, R38 and R32. Male shank adapters possible.
------	--

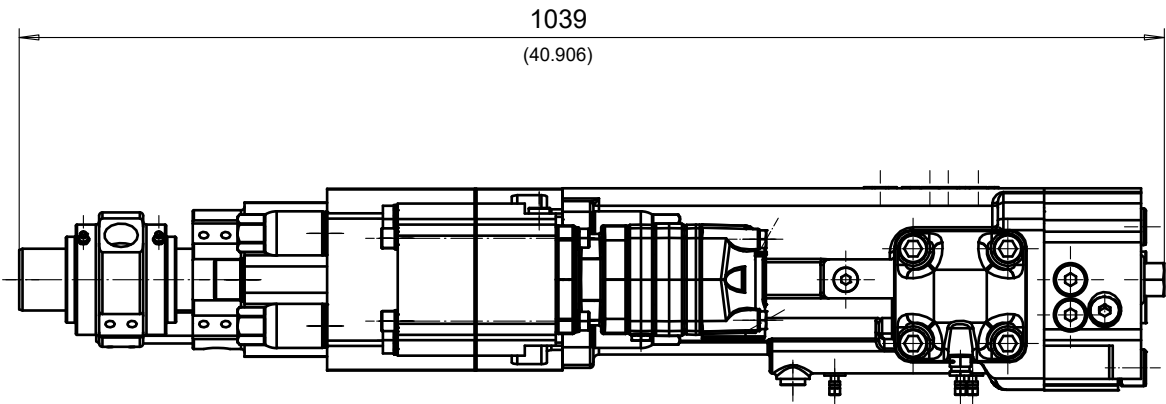
FLUSHING SEALS

BLTF FLUSHING HEAD	4+1
--------------------	-----

BLTF OPTION FOR DOOFOR DF540L



BLTF OPTION FOR DOOFOR DF550L AND DF560L

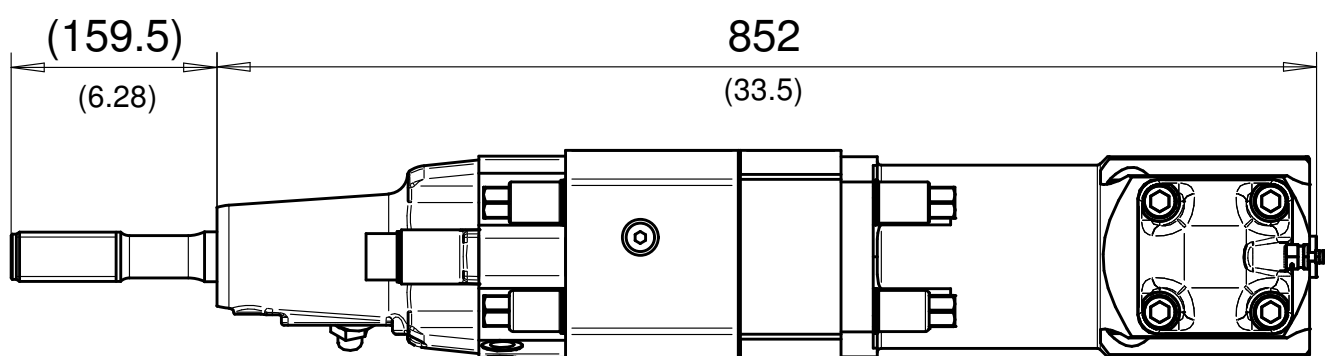


EXT OPTION FOR IMPROVED PERFORMANCE

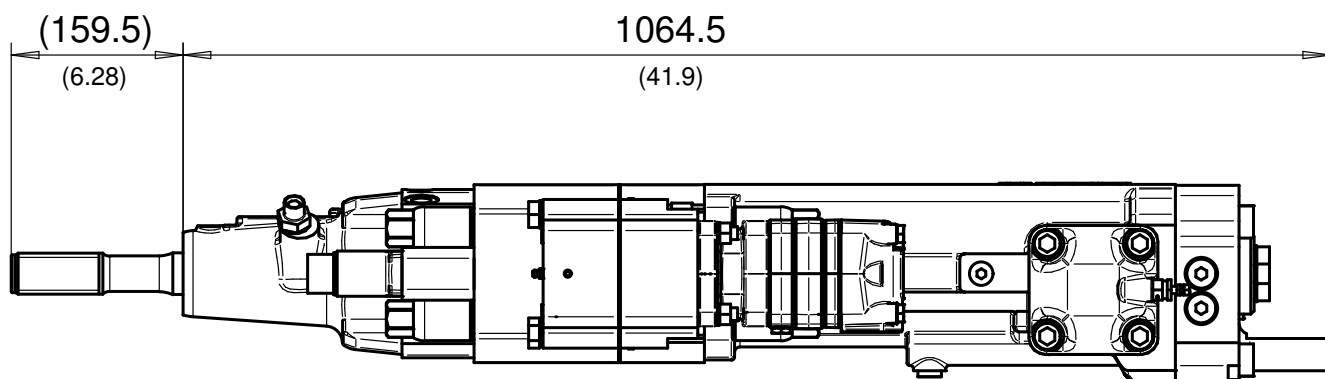
EXT-option attaches an extractor (back hammer) to the rock drill. The extractor lifts the shank adapter back to the striking point, enabling efficient removal of stuck drill steels from the rock. In addition, the extractor function assists in the reopening of thread lines on the drill steel during extension rod drilling.

EXT-option is available for Doofoor D540L, DF550L and DF560L with a standard flushing head. It can be used together with 2M-option.

EXT OPTION FOR DF540L



EXT OPTION FOR DF550L AND DF560L

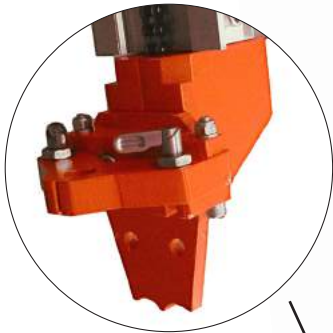


DOOFOR FEED SYSTEM COMPONENT KIT

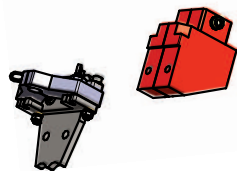
Doofor offers a set of supporting components for customers, who wish to build their own drill feed. For example, base machines for the drill feed can be excavators, mini-loaders and skid steer loaders. All components can be purchased separately.



Standard option:
Durable machined carriage plates and hydraulic, pneumatic and manually operated drill steel retainers.



Standard option:
Openable or fixed rod guide in various sizes for your drilling needs.



Standard option:
Robust chain drive for feed. Motor with brake and counterbalance valve system.



Extra options:

- Protective cage
- Hose bracket
- Lubricator for the rock drill
- Excavator mounting bracket
- Hydraulic air compressor

Doofor drilling attachment kit is suitable for rock drills under 100 kg (220 lb).



 **Doofor**
ROCK DRILLS





WWW.DOOFOR.COM

TALTTAKATU 8
FI-37150 NOKIA, **FINLAND**
TEL. +358 3 343 0747
INFORMATION@DOOFOR.FI